

The Forest Park.



Your trusted local.

G.J. Gardner. HOMES



Allow yourself to imagine the lifestyle you've always wanted, in the home you deserve!

The new G.J. Gardner Homes Forest Park design range seamlessly blends the relaxed comfort of a family home with the modern conveniences of a contemporary urban lifestyle. With a choice of four floorplans, this compact design boasts plenty of living space but is suitable for a wide range of home sites. The heart of the home is a spacious, open-plan kitchen, living and dining area with butler's pantry and breakfast bar – the ideal place to for the family to relax, connect or entertain. Featuring four bedrooms, three bathrooms, a study and another two separate living areas, the Forest Park has everything the growing family needs.

Images may depict fixtures, finishes and features not supplied by G.J. Gardner Homes. These items include planter boxes, retaining walls, water features, pergolas, screens and decorative landscaping items such as fencing and outdoor kitchens and barbecues.

Features:

- + Four bedrooms
- + Open-plan kitchen, dining and living
- + Activity room, study and formal lounge
- + Designed to suit a wide range of sites

Get in touch today!
Call 132 789 or visit gjgardner.com.au

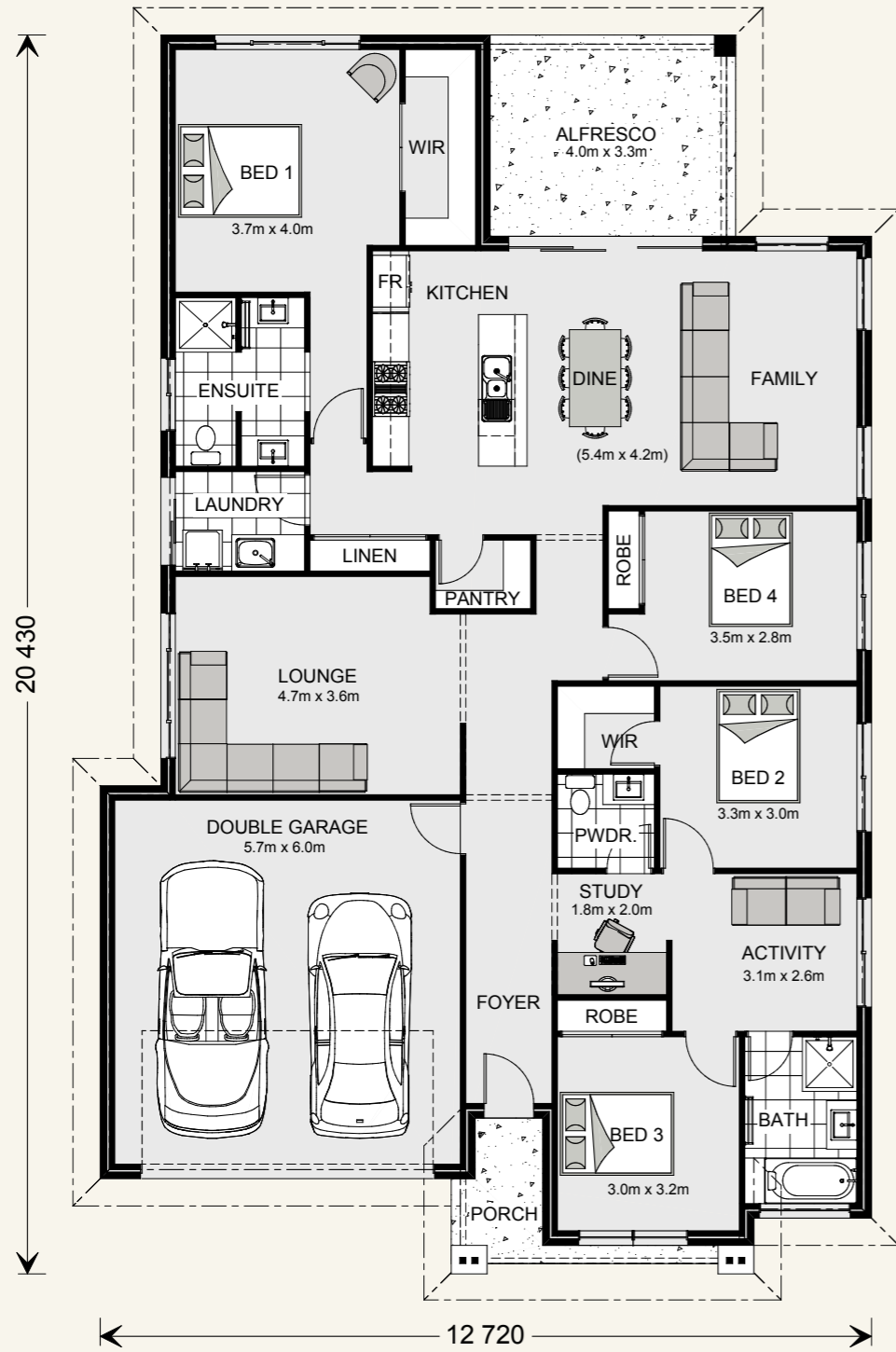
G.J. Gardner. HOMES

Forest Park 228.



Suits corner & rural sites,
or standard lot width: 14m +

Floor sizes - Resort Façade		Alfresco:	13.4 m ²
Living:	173.1 m ²	Portico:	4.3 m ²
Garage:	37.5 m ²	Total:	228.3 m²

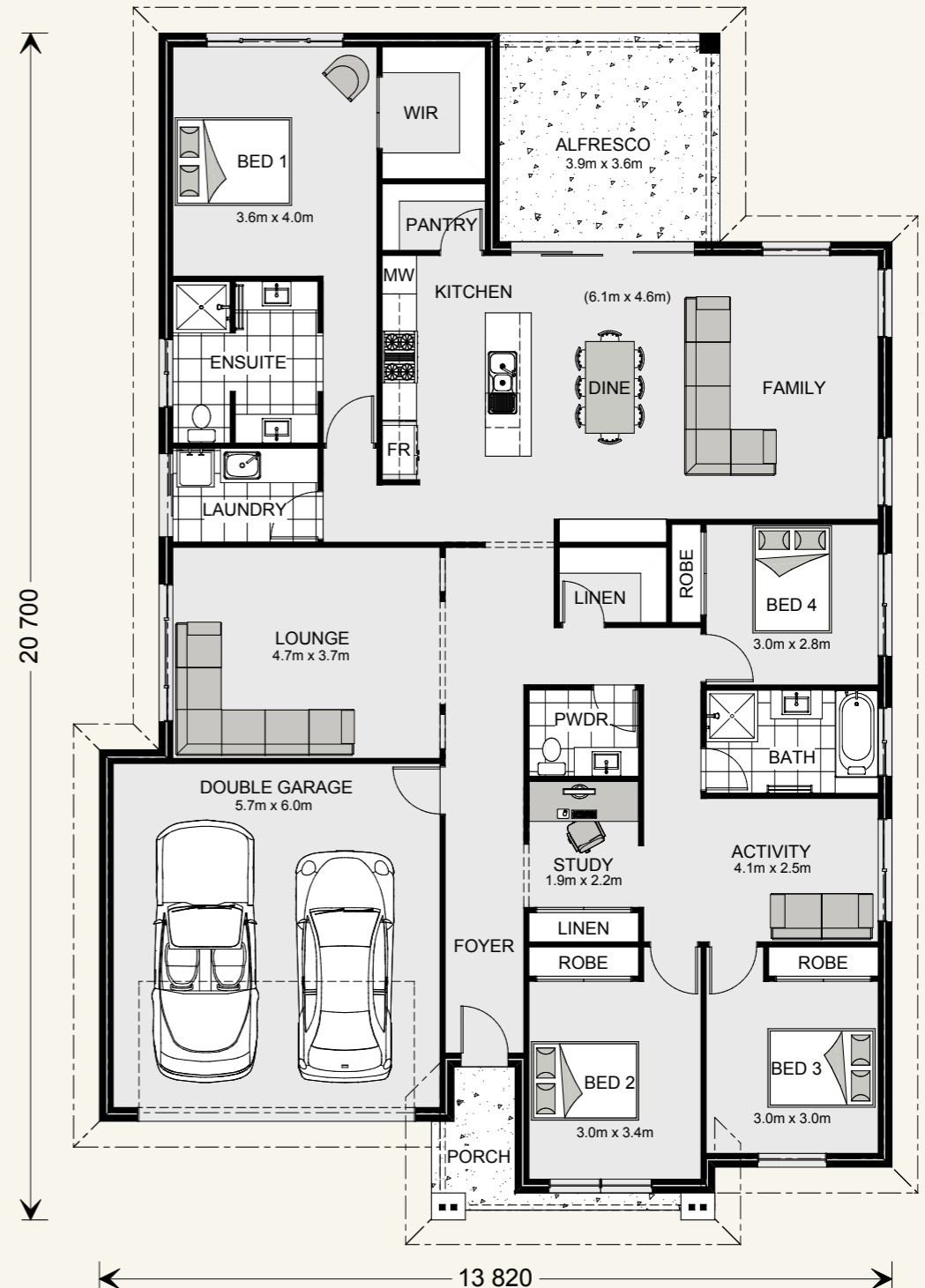


Forest Park 249.



Suits corner & rural sites,
or standard lot width: 15m +

Floor sizes - Resort Façade		Alfresco:	14.0 m ²
Living:	192.7 m ²	Portico:	4.3 m ²
Garage:	37.5 m ²	Total:	248.5 m²

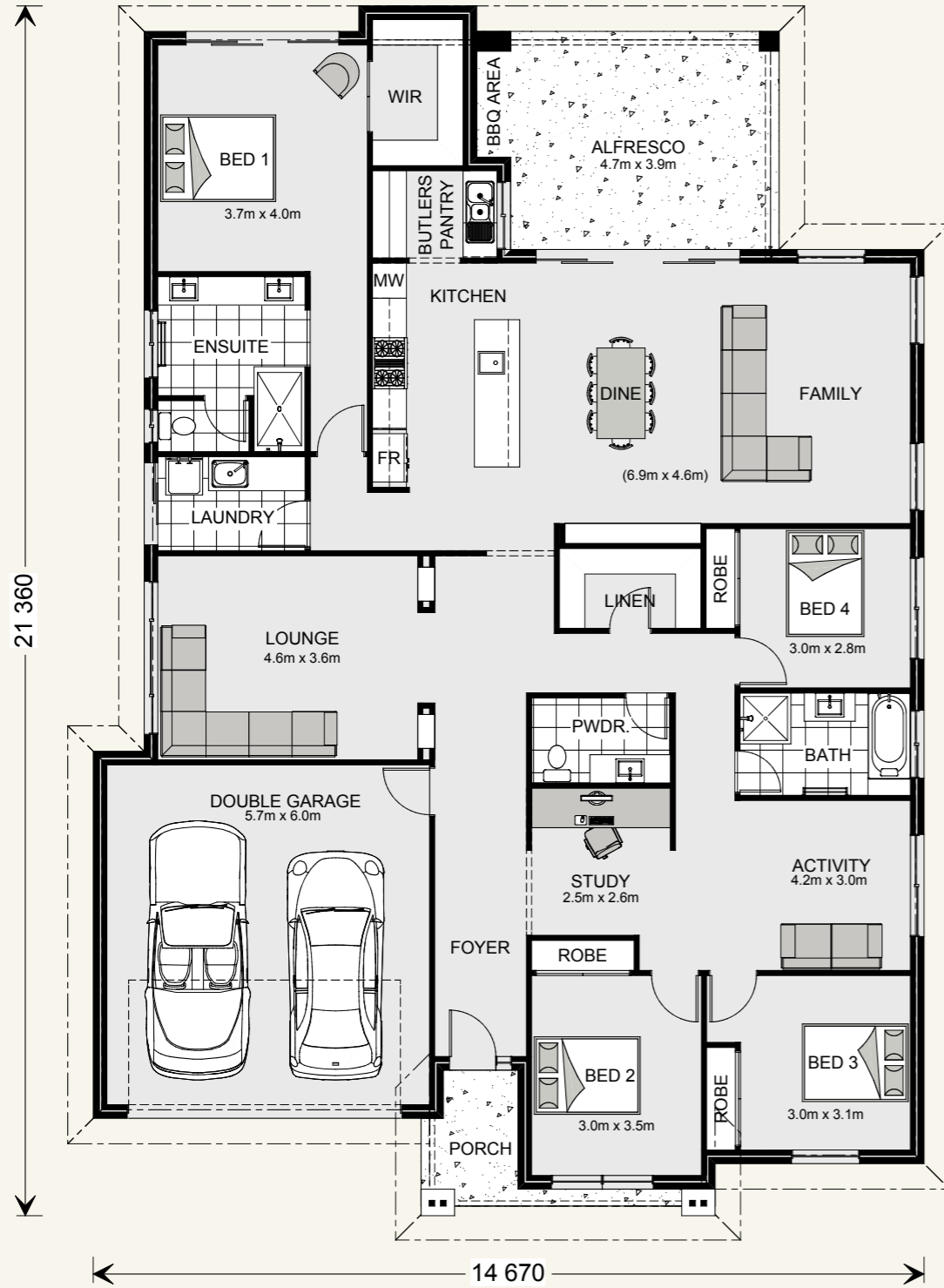


Forest Park 272.

4 2.5 2

Suits corner & rural sites,
or standard lot width: 16m +

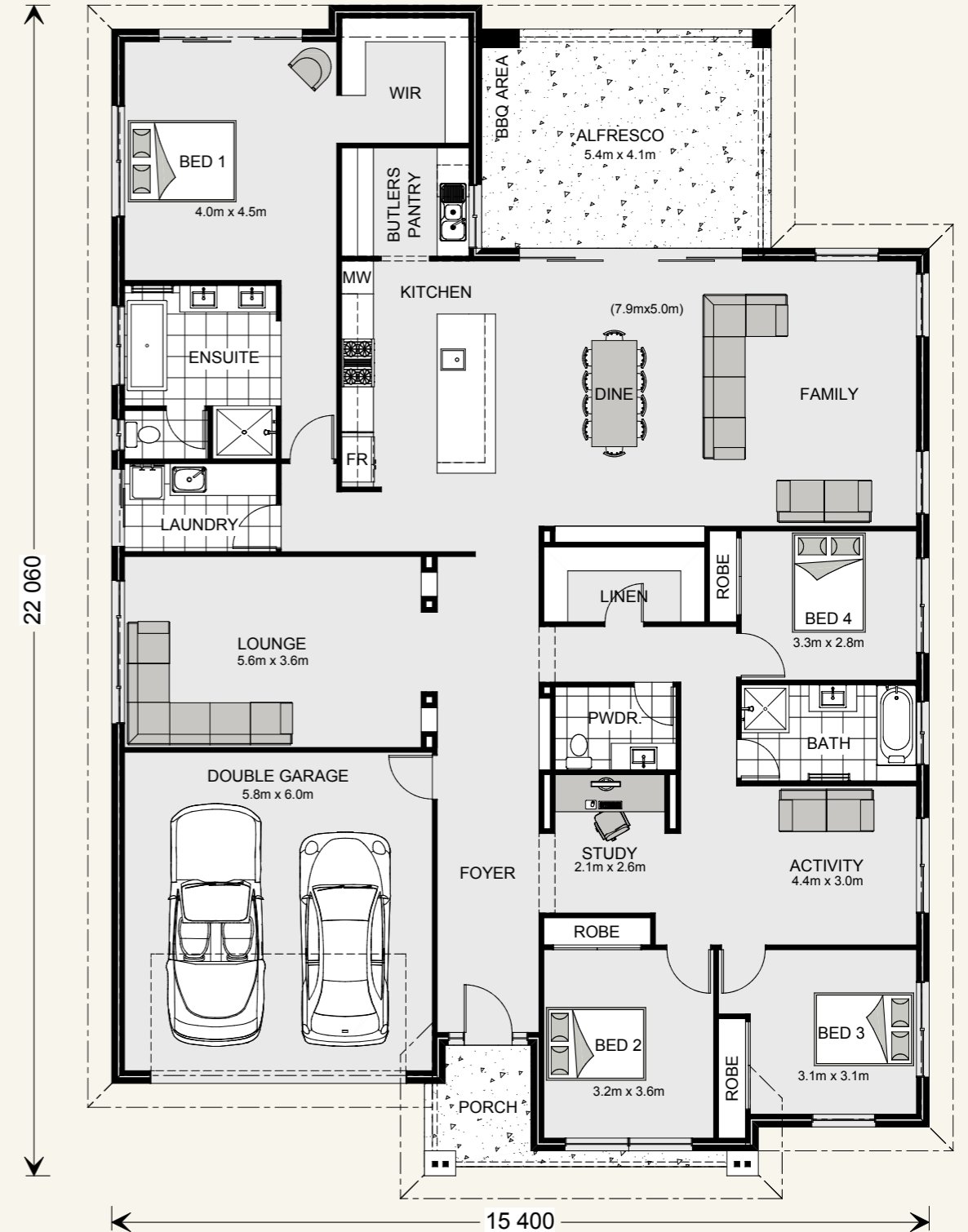
Floor sizes - Resort Façade		Alfresco:	19.6 m ²
Living:	210.3 m ²	Portico:	4.8 m ²
Garage:	37.5 m ²	Total:	272.2 m²



4 2.5 2

Suits corner & rural sites,
or standard lot width: 17.5m +

Floor sizes - Resort Façade		Alfresco:	22.5 m ²
Living:	241.5 m ²	Portico:	5.6 m ²
Garage:	37.9 m ²	Total:	307.5 m²





Your trusted local.

G.J. Gardner. **HOMES**