

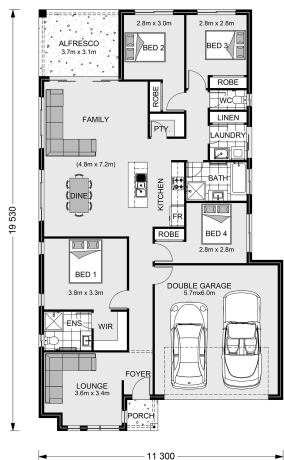


House and land package from \$478,867*

Address: Lot 13 Schomburgk Drive, Gawler East

Inclusions:

- + Walk in Robe
- + 3 Coat Paint System
- + Alfresco Under Main Roof
- + Kitchen Dining , Family opening to Alfresco
- + Double Garage with Panel Lift Door including Remote
- + 6 star Energy Rating



*Images and photographs may depict fixtures, finishes and features either not supplied by G.J. Gardner Homes or not included in any price stated. These items include furniture, swimming pools, pool decks, fences, landscaping - including planter boxes, retaining walls, water features, pergolas, screens and decorative landscaping items such as fencing and outdoor kitchens and barbeques. For detailed home pricing, please talk to a new homes consultant.

Claremont 195 - Express Series

4 2 2

Give us a call or drop in for a chat today.

Office:

Barossa

83-85 Murray St, Gawler SA 5118

BLD275969

Moein Momtahan

New Home Consultant

Call: 0418841655

Email: moein.momtahan@gjgardner.com.au

Call: (08) 8100 0770

Email: Mark.Horsburgh@gjgardner.com.au

Or visit gjgardner.com.au

Welcome **home.**

G.J. Gardner. HOMES