



House and land package from \$617,900*

Address: 4617 PENDEREL, MOUNT DUNEED

Inclusions:

- + 2550mm Ceilings
- + Double Glazed Windows
- + Stylish Hamptons street facade
- + Covered Alfresco
- + Ducted Heating
- + Site Costs Allowance

Bridgewater 225 - Element Series

4 2 2

Give us a call or drop in for a chat today.

Office:

Geelong
228 Moorabool St, Geelong Vic 3220
Oakwood Plains Pty Ltd, CDB-U 54088.

Simon Marsh

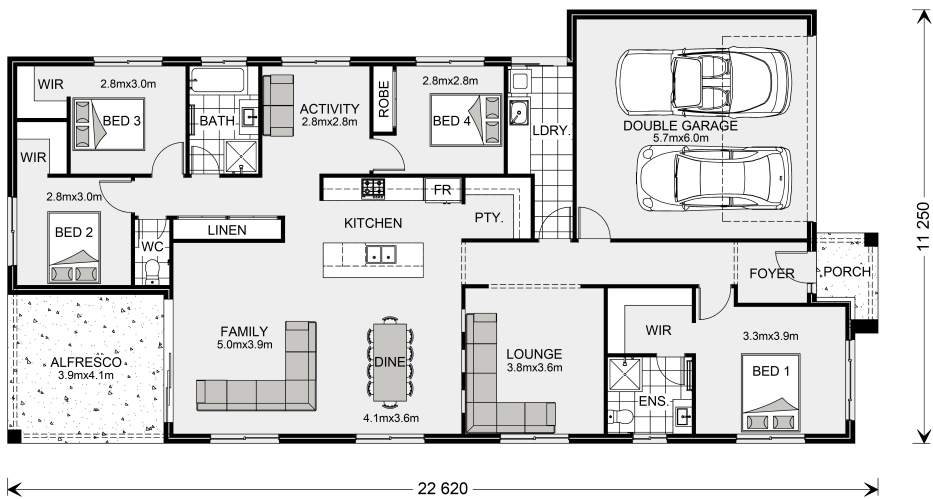
New Home Consultant
Call: 0410 271 891
Email: simon.marsh@gjgardner.com.au

Simon Marsh

New Home Consultant
Call: 0410 271 891
Email: simon.marsh@gjgardner.com.au

Call: 03 5221 1447

Email: geelong@gjgardner.com.au
Or visit gjgardner.com.au



*Images and photographs may depict fixtures, finishes and features either not supplied by G.J. Gardner Homes or not included in any price stated. These items include furniture, swimming pools, pool decks, fences, landscaping - including planter boxes, retaining walls, water features, pergolas, screens and decorative landscaping items such as fencing and outdoor kitchens and barbecues. For detailed home pricing, please talk to a new homes consultant.

Welcome **home.**

G.J. Gardner. HOMES