



House and land package from \$578,032*

Address: 825, 29 Gracilis Rise, South Nowra

Inclusions:

- + North facing level 532m2 block
- + Located 5 minutes to Nowra centre
- + Includes Carpet & Vinyl flooring
- + Complete Coast inclusions & Concrete driveway
- + Start your new beginning here
- + Fixed Price to 30/09/2020 incl Standard Site Costs & Council Fees

Oceanside 212 - Element Series

4 2 2

Give us a call or drop in for a chat today.

Office:

Shoalhaven
3/ 10 Central Ave, South Nowra NSW 2541

Todd Gallant

New Home Consultant

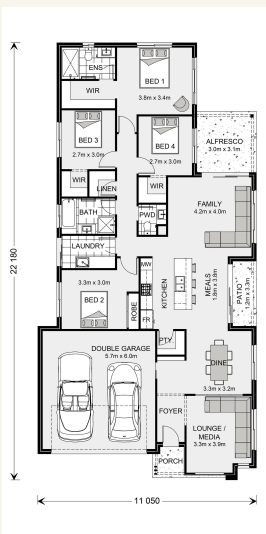
Call: 0408 988 086

Email: todd.gallant@gjgardner.com.au

Call: 02 4422 9400

Email: shoalhaven@gjgardner.com.au

Or visit gjgardner.com.au



*Images and photographs may depict fixtures, finishes and features either not supplied by G.J. Gardner Homes or not included in any price stated. These items include furniture, swimming pools, pool decks, fences, landscaping - including planter boxes, retaining walls, water features, pergolas, screens and decorative landscaping items such as fencing and outdoor kitchens and barbeques. For detailed home pricing, please talk to a new homes consultant.

Welcome **home.**

G.J. Gardner. HOMES