

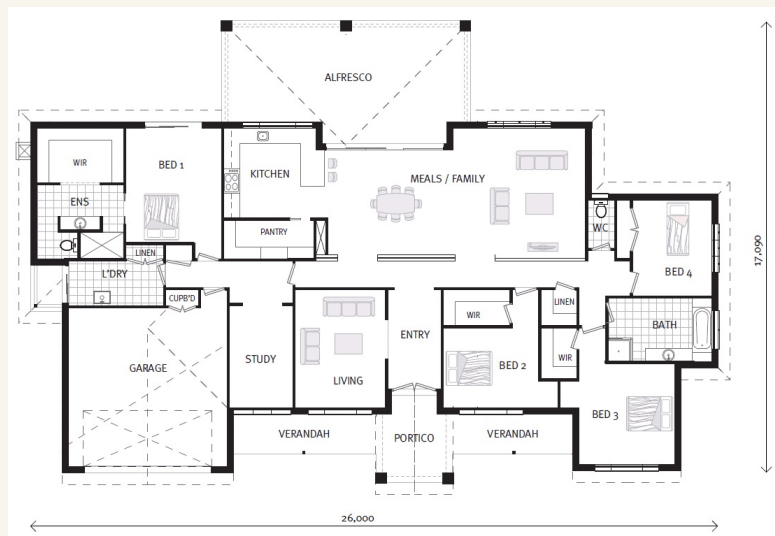


House and land package from \$825,292*

Address: 10 Eagle Place, Bannockburn

Inclusions:

- + Homestead Facade
- + Double Glazed Windows & Sliding Doors with Flyscreens
- + Carpet & Vinyl Plank Flooring Throughout
- + 900 Westinhouse Stainless Steel Appliances
- + Caesarstone Benchtops to the Kitchen
- + Septic Treatment System with Sub Surface Irrigation allowance



*Images and photographs may depict fixtures, finishes and features either not supplied by G.J. Gardner Homes or not included in any price stated. These items include furniture, swimming pools, pool decks, fences, landscaping - including planter boxes, retaining walls, water features, pergolas, screens and decorative landscaping items such as fencing and outdoor kitchens and barbeques. For detailed home pricing, please talk to a new homes consultant.

Caspian 347 - Estate Series

4 2 2

Give us a call or drop in for a chat today.

Office:

Geelong
228 Moorabool St, Geelong Vic 3220
Oakwood Plains Pty Ltd, CDB-U 54088.

Darren Harding-Taylor
New Home Consultant
Call: 0459 823 100
Email: darren.harding-taylor@gjgardner.com.au

Call: 03 5221 1447
Email: geelong@gjgardner.com.au
Or visit gjgardner.com.au

Welcome **home.**

G.J. Gardner. HOMES