

House & Land Package.



House and land package from \$394,559*

Address: 23 Independent way, Traralgon

Inclusions:

- + Thermally Broken Double Glazed Windows
- + Cross over Allowance
- + Driveway Allowance
- + Overhead Cabinets to Kitchen
- + Braemar Split System
- + Harmony Vinyl Planks & Carpet Through-out

Brighton 175 - Express Series

4 2 2

Give us a call or drop in for a chat today.

Office:

Central Gippsland

85 Macarthur St, Sale VIC 3850

APR Constructions CDB-U 62062

Rheanna Palermo

New Home Consultant

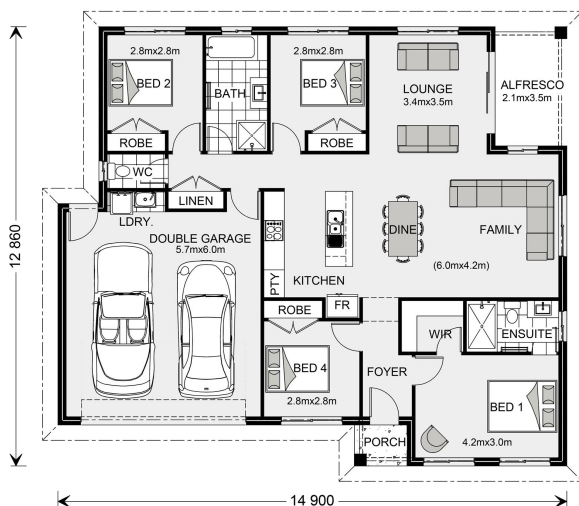
Call: 0447763193

Email: rheanna.palermo@gjgardner.com.au

Call: 03 5143 1499

Email: centralgippsland@gjgardner.com.au

Or visit gjgardner.com.au



*Images and photographs may depict fixtures, finishes and features either not supplied by G.J. Gardner Homes or not included in any price stated. These items include furniture, swimming pools, pool decks, fences, landscaping - including planter boxes, retaining walls, water features, pergolas, screens and decorative landscaping items such as fencing and outdoor kitchens and barbeques. For detailed home pricing, please talk to a new homes consultant.

Welcome **home.**

G.J. Gardner. **HOMES**