



House and land package from \$471,534*

Address: 3, 70 Killeen Street (Country Estate), Stratford

Inclusions:

- + Homestead Facade
- + 2 x Split Systems
- + Driveway & Crossover Allowance
- + Harmony Vinyl Planks Through-out
- + Carpet to all the bedrooms
- + Select Inclusions

Balmoral 240 - Homestead Series

4 2 2

Give us a call or drop in for a chat today.

Office:

Central Gippsland
85 Macarthur St, Sale VIC 3850
APR Constructions CDB-U 62062

Rheanna Palermo

New Home Consultant

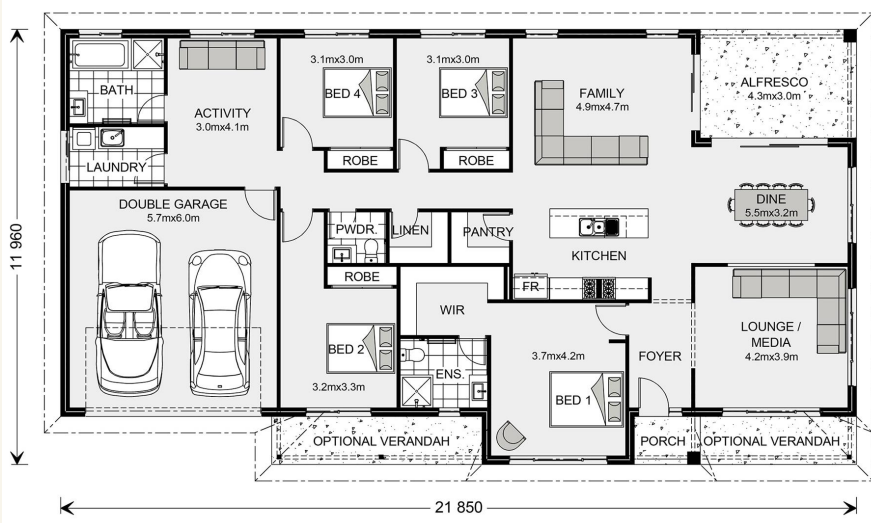
Call: 0447763193

Email: rheanna.palermo@gjgardner.com.au

Call: 03 5143 1499

Email: centralgippsland@gjgardner.com.au

Or visit gjgardner.com.au



*Images and photographs may depict fixtures, finishes and features either not supplied by G.J. Gardner Homes or not included in any price stated. These items include furniture, swimming pools, pool decks, fences, landscaping - including planter boxes, retaining walls, water features, pergolas, screens and decorative landscaping items such as fencing and outdoor kitchens and barbeques. For detailed home pricing, please talk to a new homes consultant.

Welcome **home.**

G.J. Gardner. HOMES