

Imagine your **home**.

the twin waters.



**Allow yourself to imagine the lifestyle
you've always wanted, in the home you
deserve!**

Immediately on entering Twin Waters, you'll have a sense of arrival. This is a home with plenty of space and room for a growing family and superb facilities for the discerning entertainer.

Twin Waters Designs, exclusive to G.J. Gardner Homes, has been created to impress and to deliver comfort - a winning combination. The light and airy feel to the house lifts the spirits, supported by the resort-like alfresco and huge retreat areas which are sure to become your family's favourite spaces.

Explore the flawless luxury that is Twin Waters and see how life should be lived.

Contact us on **132 789** or visit at gjpgardner.com.au

The Twin Waters Designs offer individually crafted facades that will inspire you by providing a choice of homes that reflect your personal lifestyle and preferences.

G.J. Gardner. HOMES

The Twin Waters facade options.

G.J. Gardner's tailored facades give you the opportunity to personalise your home. With Executive, Classive, Resort, Urban, Traditional and Beach facades to choose from, you can bring your home to life, making it as individual as you are!

EXECUTIVE



RESORT

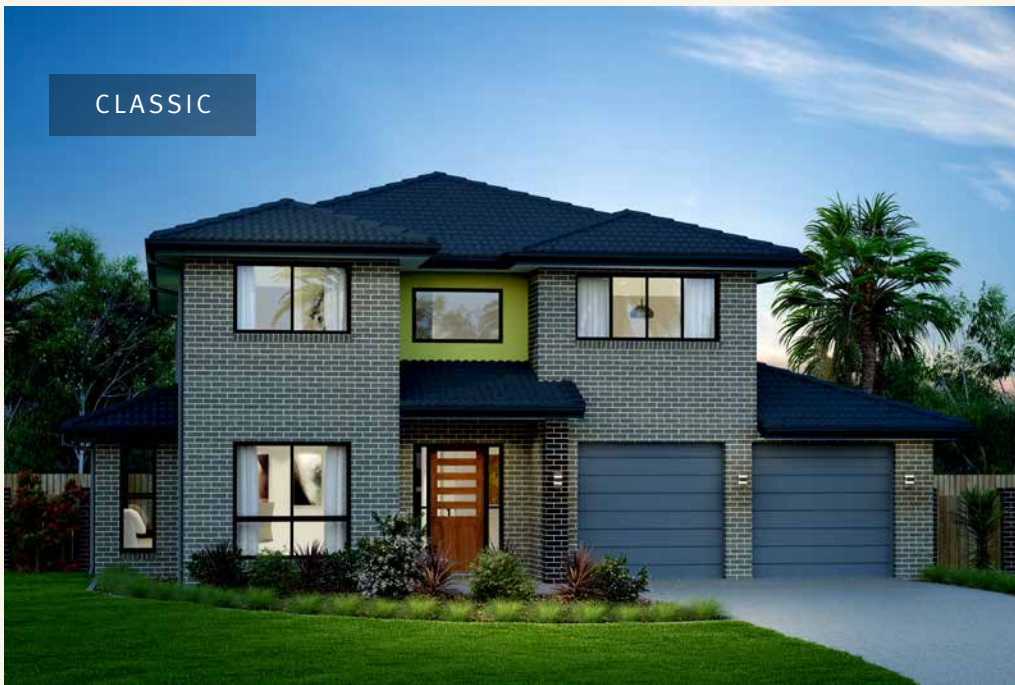


TRADITIONAL



Images may depict fixtures, finishes and features not supplied by G.J. Gardner Homes. These items include planter boxes, retaining walls, water features, pergolas, screens and decorative landscaping items such as fencing and outdoor kitchens and barbecues.

CLASSIC



With you every step of the way.

Partner with G.J. Gardner Homes, and together we'll transform your ideas into reality. Let us guide you through the entire home building process. With our local knowledge and insights coupled with access to your area's local architects, tradesmen and homebuilders, you know you'll be completely looked after by G.J. Gardner Homes.

No two houses ever need to be the same. We have 24 flexible home designs to choose from, so your fully customised home reflects your family's unique lifestyle and budget.

URBAN



BEACH

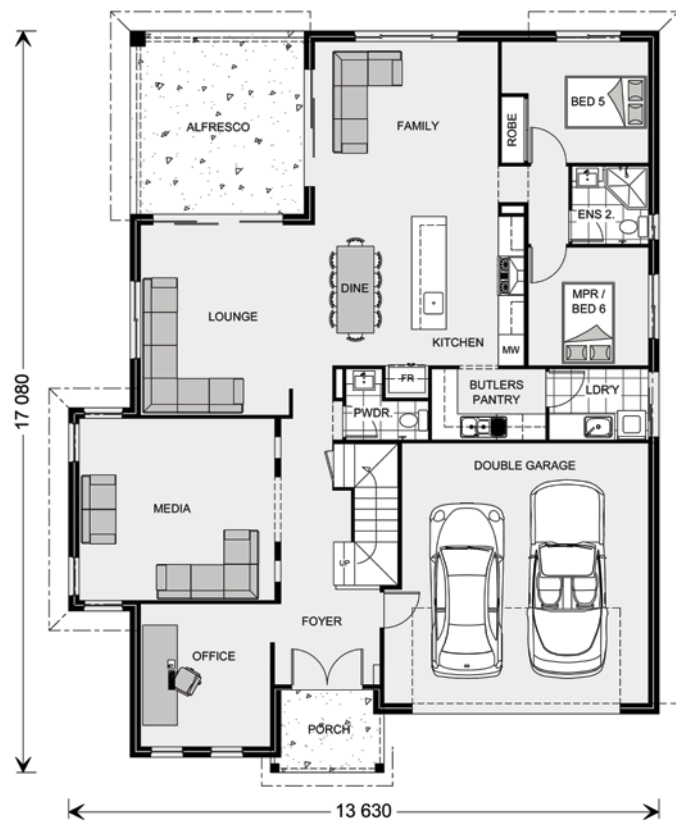
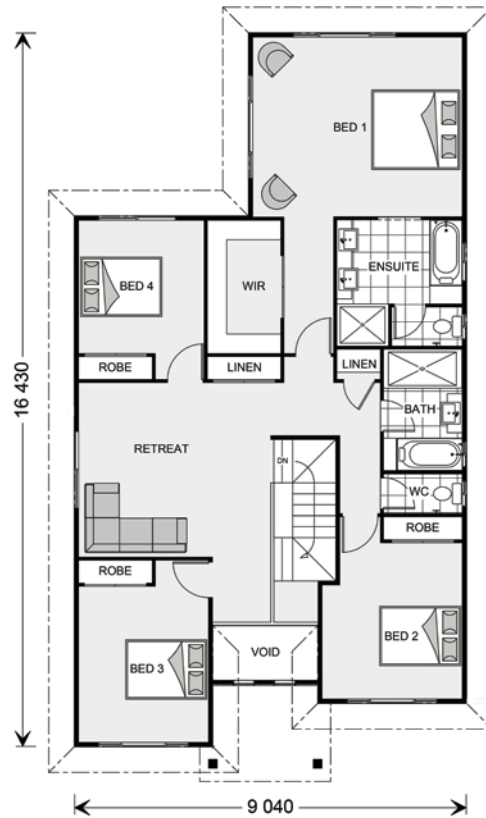


The Twin Waters 330.

6  3.5  2 

FEATURES

- + 4 Living zones
- + Butlers pantry
- + Office
- + Large walk-in robe



SPECIFICATIONS

Floor Area-Ground

Living: 144.7 sq.m

Garage: 38.5 sq.m

Alfresco: 17.8 sq.m

Porch: 4.5 sq.m

Total: 205.5 sq.m

Width: 13.630 m

Length: 17.080 m

Floor Area-Upper

Living: 121.4 sq.m

Void: 3.3 sq.m

Total: 124.7 sq.m

Total Area

Total: 330.3 sq.m

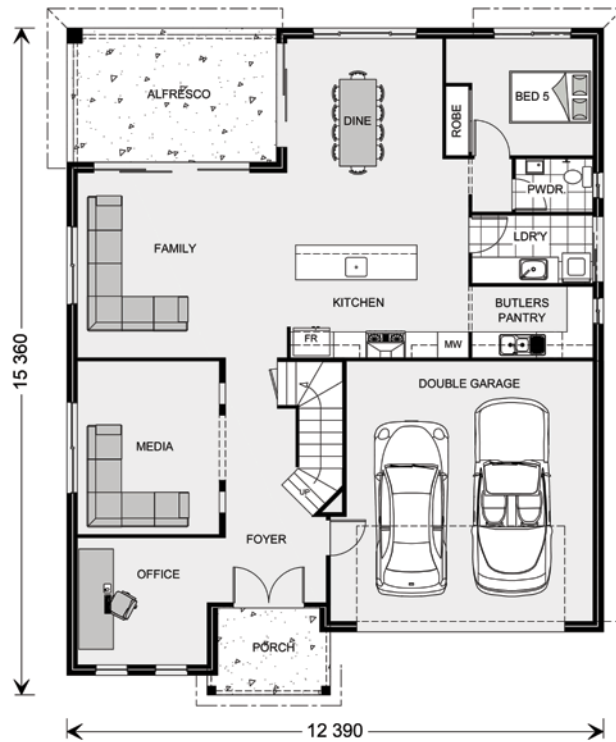
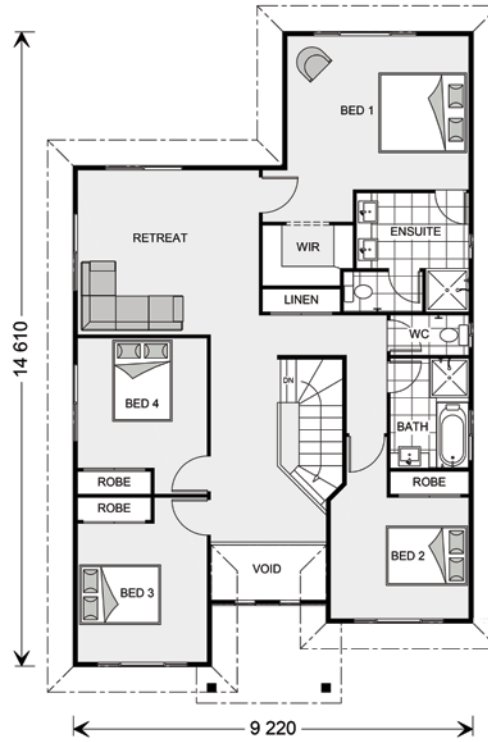
NOTES

The Twin Waters 292.

5  2.5  2 

FEATURES

- + Office
- + 4 Living zones
- + Butlers pantry
- + Lifestyle alfresco



SPECIFICATIONS

Floor Area-Ground

Living: 121.3 sq.m

Garage: 38.2 sq.m

Alfresco: 15.0 sq.m

Porch: 5.2 sq.m

Total: 179.7 sq.m

Width: 12.390 m

Length: 15.360 m

Floor Area-Upper

Living: 108.9 sq.m

Void: 3.7 sq.m

Total: 112.6 sq.m

Total Area

Total: 292.3 sq.m

The facades shown on this brochure are not representations of this floor plan.

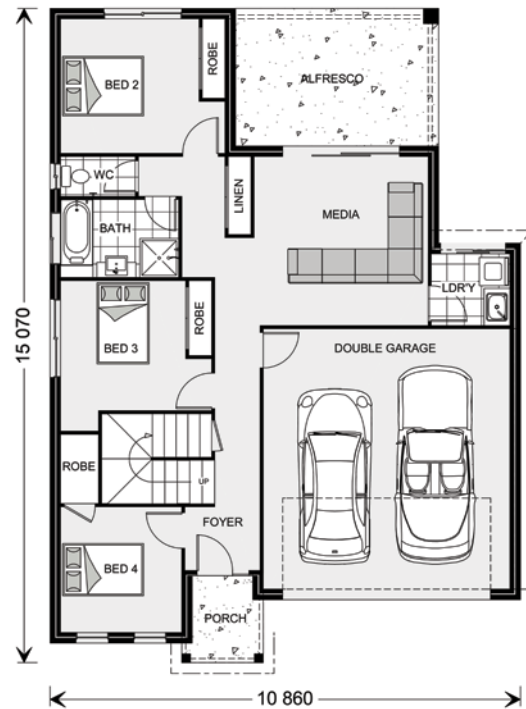
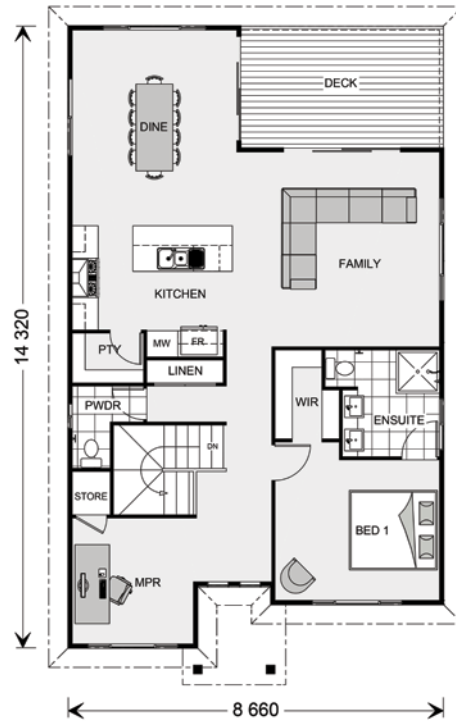
NOTES

The Twin Waters 261.

4  2.5  2 

FEATURES

- + Media room
- + Upper decking
- + Walk-in pantry
- + Multi-purpose room



SPECIFICATIONS

Floor Area-Ground

Living: 88.1 sq.m
Garage: 37.2 sq.m
Alfresco: 14.9 sq.m
Porch: 3.3 sq.m
Total: 143.5 sq.m
Width: 10.860 m
Length: 15.070 m

Floor Area-Upper

Living: 104.4 sq.m
Deck: 13.2 sq.m
Total: 117.6 sq.m

Total Area

Total: 261.1 sq.m

The facades shown on this brochure are not representations of this floor plan.

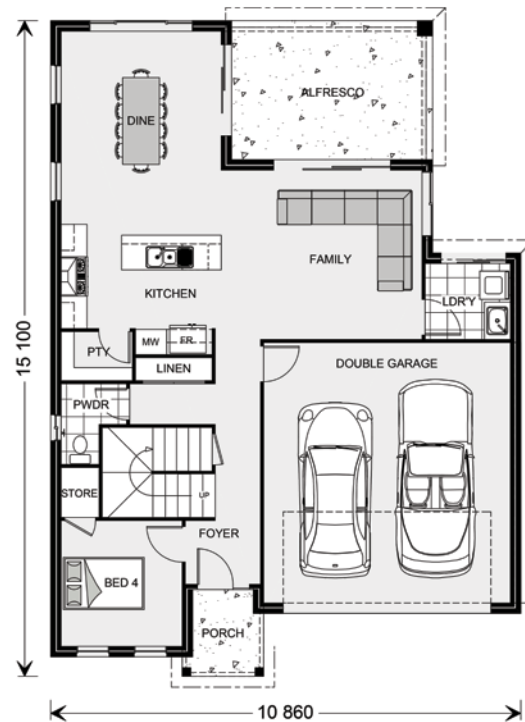
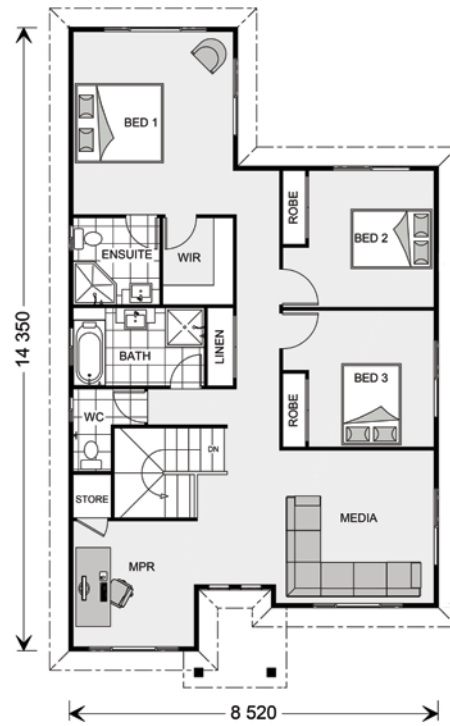
NOTES

The Twin Waters 244.

4  2.5  2 

FEATURES

- + Multi purpose room
- + Walk-in pantry
- + Lifestyle alfresco
- + Open plan living



SPECIFICATIONS

Floor Area-Ground

Living: 87.8 sq.m

Garage: 37.2 sq.m

Alfresco: 14.8 sq.m

Porch: 3.3 sq.m

Total: 143.1 sq.m

Width: 10.860 m

Length: 15.100 m

Floor Area-Upper

Total: 101.2 sq.m

Total Area

Total: 244.3 sq.m

The facades shown on this brochure are not representations of this floor plan.

NOTES

Locals always at hand.

Designing and building your ideal home is an exciting experience, and when you partner with professional and established builders - G.J. Gardner Homes, the journey will be fulfilling and rewarding.



G.J. Gardner. HOMES

Internal photographs are from different G.J. Gardner Homes to those featured in this brochure.