

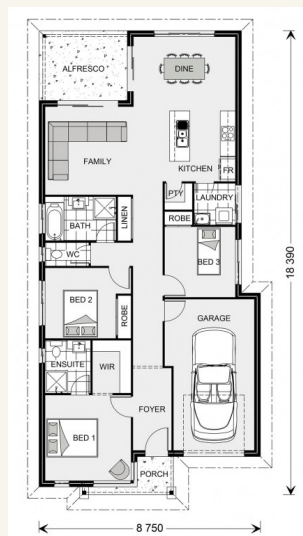


House and land package from \$305,000*

Address: 2 / 2B Unit 1 William Street, Westbury

Inclusions:

- + Fixed Price Contract
- + Double Glazed Aluminium Windows
- + Dakin Reverse Cycle Inverter Heat Pump
- + Dishwasher
- + 60cm Induction Hot Plates
- +



*Images and photographs may depict fixtures, finishes and features either not supplied by G.J. Gardner Homes or not included in any price stated. These items include furniture, swimming pools, pool decks, fences, landscaping - including planter boxes, retaining walls, water features, pergolas, screens and decorative landscaping items such as fencing and outdoor kitchens and barbecues. For detailed home pricing, please talk to a new homes consultant.

Kurrajong 147 - Express Series

3 2 1

Give us a call or drop in for a chat today.

Office:

Launceston
3/156 Elphin Rd, Launceston TAS 7250

Rod Knowles

New Home Consultant

Call: 0418 815 307

Email: rod.knowles@gjgardner.com.au

Call: 03 6334 4777

Email: launceston@gjgardner.com.au

Or visit gjgardner.com.au

Welcome **home.**

G.J. Gardner. HOMES