

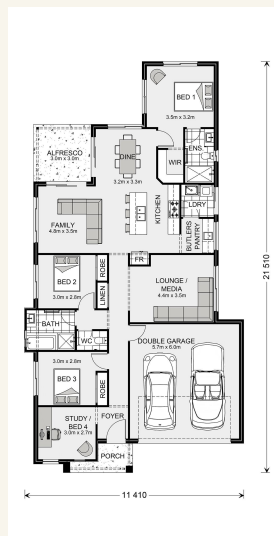


House and land package from \$430,112*

Address: Lot 1498 Wilkinson Court, Gawler East

Inclusions:

- + 3 Coat Paint System
- + 4th Bedroom/Study Option
- + Master Bedroom to Rear
- + Kitchen Dining , Family opening to Alfresco
- + Double Garage with Panel Lift Door including Remote
- + Alfresco Under Main Roof



*Images and photographs may depict fixtures, finishes and features either not supplied by G.J. Gardner Homes or not included in any price stated. These items include furniture, swimming pools, pool decks, fences, landscaping - including planter boxes, retaining walls, water features, pergolas, screens and decorative landscaping items such as fencing and outdoor kitchens and barbeques. For detailed home pricing, please talk to a new homes consultant.

Edgewater 190 - Element Series

3 2 2

Give us a call or drop in for a chat today.

Office:

Barossa

83-85 Murray St, Gawler SA 5118

BLD275969

Vicki Patterson

New Home Consultant

Call: 0447151034

Email: vicki.patterson@gjgardner.com.au

Call: (08) 8100 0770

Email: Mark.Horsburgh@gjgardner.com.au

Or visit gjgardner.com.au

Welcome **home.**

G.J. Gardner. HOMES