

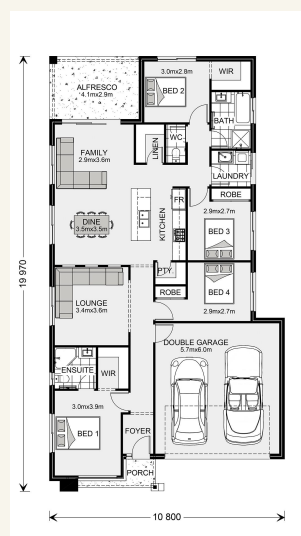


## House and land package from \$416,151\*

**Address:** Lots 1506 Denham Street, Gawler East (Springwood Estate, The Village)

### Inclusions:

- + 4 Spacious Bedrooms
- + Kitchen, Dining, Family opening onto Alfresco
- + Overhead Cupboards, Canopy Rangehood
- + Special Select Inclusions with Bonus Element Lighting Package
- + All Enquiries to Vicki on 0447 151 034
- + GJ Gardner Barossa -Your Local Builder



\*Images and photographs may depict fixtures, finishes and features either not supplied by G.J. Gardner Homes or not included in any price stated. These items include furniture, swimming pools, pool decks, fences, landscaping - including planter boxes, retaining walls, water features, pergolas, screens and decorative landscaping items such as fencing and outdoor kitchens and barbeques. For detailed home pricing, please talk to a new homes consultant.

## Bridgewater 190 - Element Series

4 2 2

**Give us a call or drop in for a chat today.**

### Office:

Barossa  
83-85 Murray St, Gawler SA 5118  
BLD275969

**Vicki Patterson**

New Home Consultant

Call: 0447151034

Email: [vicki.patterson@gjgardner.com.au](mailto:vicki.patterson@gjgardner.com.au)

**Vicki Patterson**

New Home Consultant

Call: 0447151034

Email: [vicki.patterson@gjgardner.com.au](mailto:vicki.patterson@gjgardner.com.au)

Call: (08) 8100 0770

Email: [Mark.Horsburgh@gjgardner.com.au](mailto:Mark.Horsburgh@gjgardner.com.au)

Or visit [gjgardner.com.au](http://gjgardner.com.au)

Welcome **home.**

**G.J. Gardner.** **HOMES**