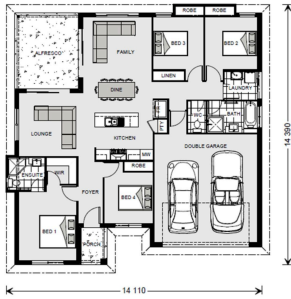


## House and land package from \$465,000\*

Address: 60 Edward Road, Batehaven

### Inclusions:

- + Standard GJ Gardner Inclusions
- + Standard Basix & Standard Site Cost Inclusions
- + Statutory & General Fees
- + Hybrid Vinyl Planks on Main floors
- + Carpet in Bedrooms & Robes
- + Heating & Cooling



\*Images and photographs may depict fixtures, finishes and features either not supplied by G.J. Gardner Homes or not included in any price stated. These items include furniture, swimming pools, pool decks, fences, landscaping - including planter boxes, retaining walls, water features, pergolas, screens and decorative landscaping items such as fencing and outdoor kitchens and barbecues. For detailed home pricing, please talk to a new homes consultant.

## Wide Bay 196 - Element Series



**Give us a call or drop in for a chat today.**

### Office:

Batemans Bay  
3 Beach Rd, Batemans Bay NSW 2536

Emily Zahra

New Home Consultant

Call: 0244721628

Email: [emily.zahra@gjgardner.com.au](mailto:emily.zahra@gjgardner.com.au)

Katrina Fogarty

New Home Consultant

Call: 02 4472 1628

Email: [katrina.fogarty@gjgardner.com.au](mailto:katrina.fogarty@gjgardner.com.au)

Call: 02 4472 1628

Email: [batemansbay@gjgardner.com.au](mailto:batemansbay@gjgardner.com.au)

Or visit [gjgardner.com.au](http://gjgardner.com.au)

Welcome **home.**

**G.J. Gardner.** **HOMES**