



House and land package from \$1,362,000*

Address: 14 Selmar Place, Innes Park, Queensland

Inclusions:

- + Many Alternative Facades Available
- + High Ceilings Throughout
- + Exposed Aggregate Driveway
- + Most Trusted Builder for 4 consecutive years from Product Review
- + Fully Installed 3 stage septic system
- + Fixed price contract

Blue Water 530 - Prestige Series



Give us a call or drop in for a chat today.

Office:

Fraser Coast/Bundaberg
152 Boat Harbour Dr, Hervey Bay Queensland 4655
QBCC: 1172776

Mark Tyler

New Home Consultant

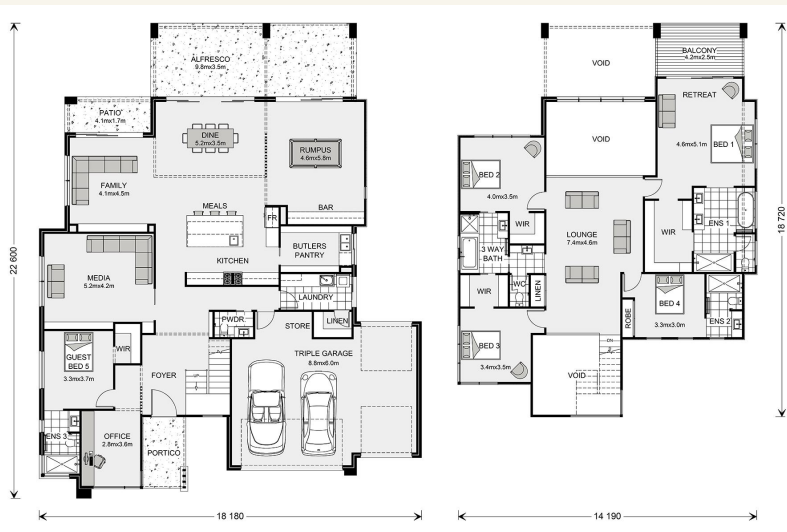
Call: 0467 973 737

Email: mark.tyler@gjgardner.com.au

Call: 07 4124 6888

Email: herveybay@gjgardner.com.au

Or visit gjgardner.com.au



*Images and photographs may depict fixtures, finishes and features either not supplied by G.J. Gardner Homes or not included in any price stated. These items include furniture, swimming pools, pool decks, fences, landscaping - including planter boxes, retaining walls, water features, pergolas, screens and decorative landscaping items such as fencing and outdoor kitchens and barbeques. For detailed home pricing, please talk to a new homes consultant.

Welcome **home.**

G.J. Gardner. HOMES