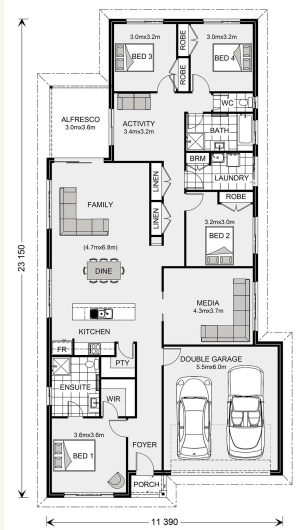


## House and land package from \$464,500\*

Address: 147 Coppabella Drive, Gobbagombalin

### Inclusions:

- + Steel Frame At No Extra Charge
- + 20 mm Stone Benchtops to Kitchen
- + Evaporative Air Conditioning and Gas Ducted Heating
- + Tiles and Carpet Throughout
- + Concrete Driveway and 1m Wide Paths (129m2 Allowance)
- + T.V Antenna, Wall Mounted Clothesline and Brick Letter Box



\*Images and photographs may depict fixtures, finishes and features either not supplied by G.J. Gardner Homes or not included in any price stated. These items include furniture, swimming pools, pool decks, fences, landscaping - including planter boxes, retaining walls, water features, pergolas, screens and decorative landscaping items such as fencing and outdoor kitchens and barbecues. For detailed home pricing, please talk to a new homes consultant.

## Pacific 230 - Express Series

4 2 2

**Give us a call or drop in for a chat today.**

### Office:

Wagga Wagga  
38 Hammond Ave, Wagga Wagga NSW 2650

Darren O'Donnell

New Home Consultant

Call: 0400 028 926

Email: [darren.odonnell@gjgardner.com.au](mailto:darren.odonnell@gjgardner.com.au)

Call: 02 6931 0256

Email: [wagga@gjgardner.com.au](mailto:wagga@gjgardner.com.au)

Or visit [gjgardner.com.au](http://gjgardner.com.au)

Welcome **home.**

**G.J. Gardner.** HOMES