



**House and land package from \$441,727\***

**Address: 17, 34 Elstead Drive, Strathdale**

**Inclusions:**

- + Resort Facade
- + Carpet & Vinyl Planks
- + Ducted Gas Heating & Evaporative Cooling
- + Blockout Blinds to Bedrooms & Living Areas
- + Concrete Driveway
- + Brick Letterbox

**Beachlands 187 - Metro Series**



**Give us a call or drop in for a chat today.**

**Office:**

Bendigo  
 437 Hargreaves Street, Bendigo Victoria 3552  
 Bendigo Urban Investments Pty Ltd, CDB-U 58150.

**Deb Wilson**

**New Home Consultant**

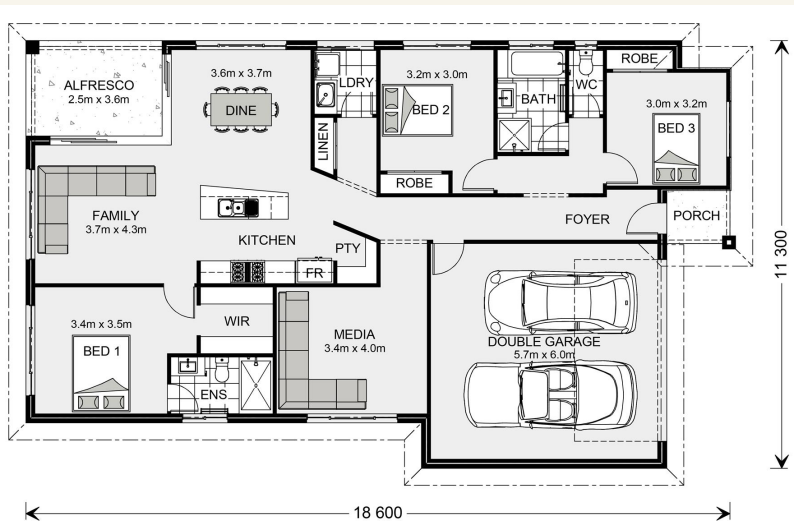
**Call: 0407 983 501**

**Email: deb.wilson@gjgardner.com.au**

**Call: 03 5442 2300**

**Email: bendigo@gjgardner.com.au**

**Or visit gjgardner.com.au**



\*Images and photographs may depict fixtures, finishes and features either not supplied by G.J. Gardner Homes or not included in any price stated. These items include furniture, swimming pools, pool decks, fences, landscaping - including planter boxes, retaining walls, water features, pergolas, screens and decorative landscaping items such as fencing and outdoor kitchens and barbeques. For detailed home pricing, please talk to a new homes consultant.

Welcome **home.**

**G.J. Gardner. HOMES**