

# House & Land Package.



House and land package from \$351,265\*

Address: 223 Eldridge court, Horsham

Inclusions:

- + Family home
- + All Floorcoverings
- + Downlights through the living areas
- + Open Plan Living
- + Good Heating and Cooling
- + All Horsham Site Costs

**Brighton 195 - Express Series**

4 2 2

**Give us a call or drop in for a chat today.**

Office:

Ararat

92 Barkly Street, Ararat Vic 3377

Jacorey Pty Ltd, CDB-U 49694.

Kerry Wade

New Home Consultant

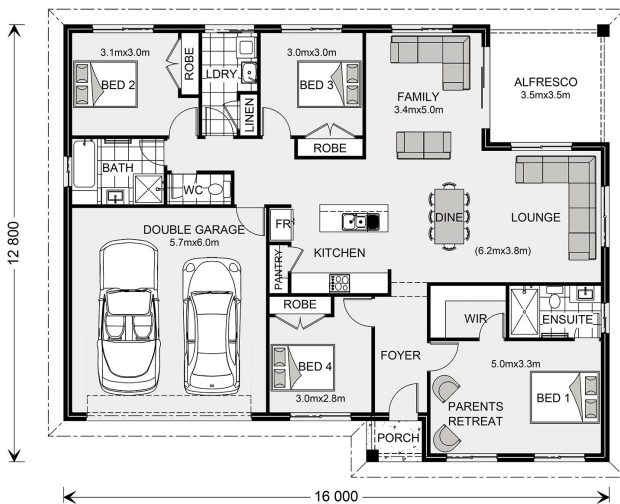
Call: +61428852820

Email: [kerry.wade@gjgardner.com.au](mailto:kerry.wade@gjgardner.com.au)

Call: 03 5352 3298

Email: [ararat@gjgardner.com.au](mailto:ararat@gjgardner.com.au)

Or visit [gjgardner.com.au](http://gjgardner.com.au)



\*Images and photographs may depict fixtures, finishes and features either not supplied by G.J. Gardner Homes or not included in any price stated. These items include furniture, swimming pools, pool decks, fences, landscaping - including planter boxes, retaining walls, water features, pergolas, screens and decorative landscaping items such as fencing and outdoor kitchens and barbeques. For detailed home pricing, please talk to a new homes consultant.

Welcome **home.**

**G.J. Gardner.** **HOMES**