

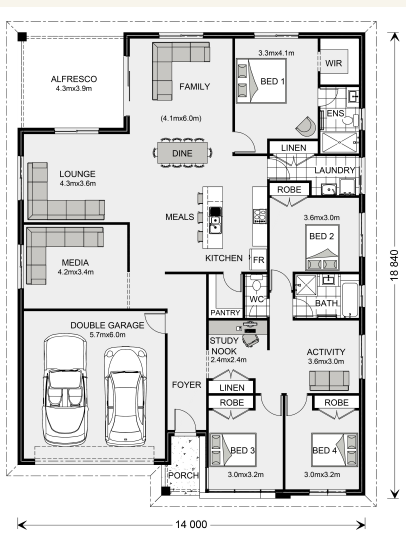


House and land package from \$698,526*

Address: 233 Willow Estate, Gisborne

Inclusions:

- +
- +
- +
- +
- +
- +



*Images and photographs may depict fixtures, finishes and features either not supplied by G.J. Gardner Homes or not included in any price stated. These items include furniture, swimming pools, pool decks, fences, landscaping - including planter boxes, retaining walls, water features, pergolas, screens and decorative landscaping items such as fencing and outdoor kitchens and barbeques. For detailed home pricing, please talk to a new homes consultant.

La Trobe 253 - Express Series

4 2 2

Give us a call or drop in for a chat today.

Office:

Bendigo

437 Hargreaves Street, Bendigo Victoria 3552

Bendigo Urban Investments Pty Ltd, CDB-U 58150.

Ana Milenovich

New Home Consultant

Call: 0419 895 530

Email: ana.milenovich@gjgardner.com.au

Call: 03 5442 2300

Email: bendigo@gjgardner.com.au

Or visit gjgardner.com.au

Welcome **home.**

G.J. Gardner. HOMES