



House and land package from \$391,767*

Address: Lot 33 Chivell Road, Angle Vale (Chivell Grove)

Inclusions:

- + Stylish central Kitchen to entertain family and guests
- + Kitchen, Dining, Family opening onto Alfresco
- + Huge Linen and Robes to all Bedrooms
- + Garage with Panel Lift Door including Remote
- + Fabulous Location, Large Block, Room for shed with driveway
- + GJ Gardner Barossa -Your Local Builder

Claremont 195 - Element Series

4 2 2

Give us a call or drop in for a chat today.

Office:

Barossa
83-85 Murray St, Gawler SA 5118
BLD275969

Vicki Patterson

New Home Consultant

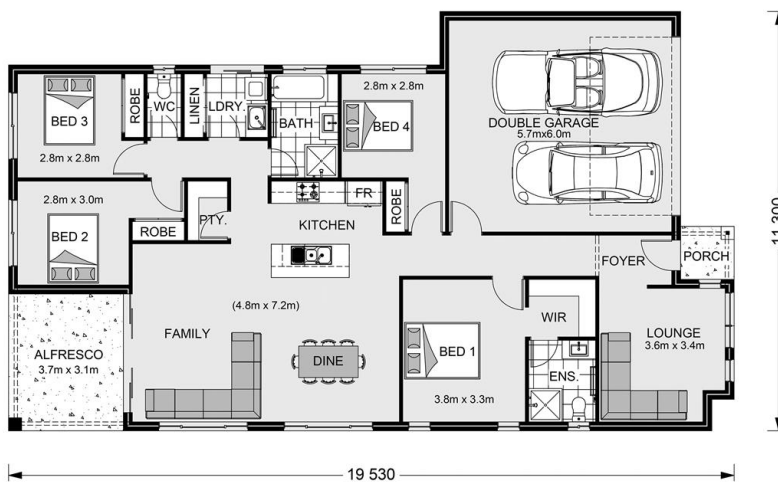
Call: 0447151034

Email: vicki.patterson@gjgardner.com.au

Call: (08) 8100 0770

Email: Mark.Horsburgh@gjgardner.com.au

Or visit gjgardner.com.au



*Images and photographs may depict fixtures, finishes and features either not supplied by G.J. Gardner Homes or not included in any price stated. These items include furniture, swimming pools, pool decks, fences, landscaping - including planter boxes, retaining walls, water features, pergolas, screens and decorative landscaping items such as fencing and outdoor kitchens and barbeques. For detailed home pricing, please talk to a new homes consultant.

Welcome **home.**

G.J. Gardner. HOMES