



House and land package from \$684,149*

Address: 7 Herbert Way, Bannockburn

Inclusions:

- + 2550mm Floor to Ceiling height
- + Westinghouse 900m Stainless Steel appliances
- + Provisional site & septic treatment system cost are included subject t
- + Carpets to Bedroom, WIR, Robes and Lounge
- + Floor tiling to wet areas and Foyer, Kitchen, Family & Dining
- + Split System Air- Conditioning to the Family / Dining area

Wishart 206 - Express Series

4 2 2

Give us a call or drop in for a chat today.

Office:

Geelong
228 Moorabool St, Geelong Vic 3220
Oakwood Plains Pty Ltd, CDB-U 54088.

Ron Mortimer

New Home Consultant

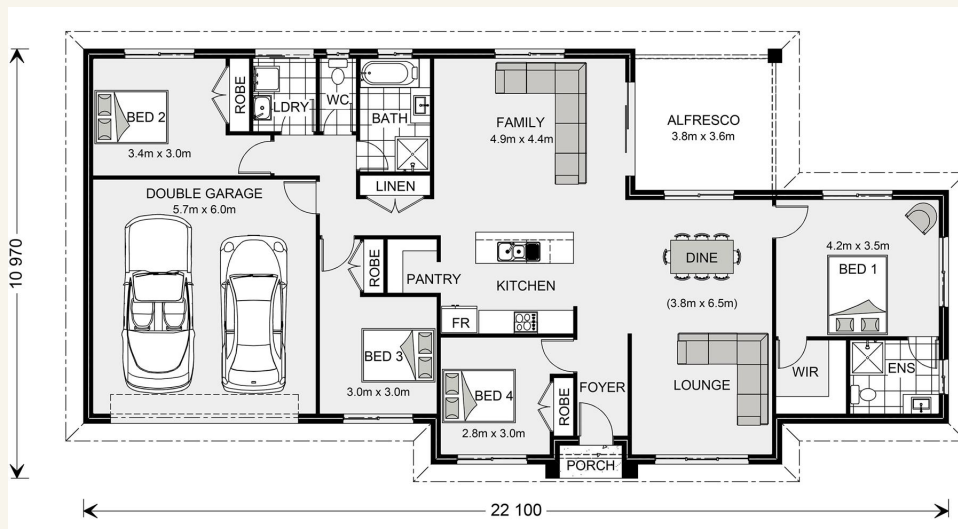
Call: 0423 233 688

Email: ron.mortimer@gjgardner.com.au

Call: 03 5221 1447

Email: geelong@gjgardner.com.au

Or visit gjgardner.com.au



*Images and photographs may depict fixtures, finishes and features either not supplied by G.J. Gardner Homes or not included in any price stated. These items include furniture, swimming pools, pool decks, fences, landscaping - including planter boxes, retaining walls, water features, pergolas, screens and decorative landscaping items such as fencing and outdoor kitchens and barbeques. For detailed home pricing, please talk to a new homes consultant.

Welcome **home.**

G.J. Gardner. HOMES