



House and land package from \$442,800*

Address: 1 Wallace St north, Coolamon

Inclusions:

- + Steel Frame At No Extra Charge
- + Smeg Appliances
- + Evaporative Air Conditioning and Gas Ducted Heating
- + Carpet & Tiling throughout
- + Concrete Driveway and 1m Wide Paths (110m² Allowance)
- + T.V Antenna, Wall Mounted Clothesline and Brick Letter Box

La Trobe 253 - Express Series

4 2 2

Give us a call or drop in for a chat today.

Office:

Wagga Wagga
38 Hammond Ave, Wagga Wagga NSW 2650

Darren O'Donnell

New Home Consultant

Call: 0400 028 926

Email: darren.odonnell@gjgardner.com.au

Darren O'Donnell

New Home Consultant

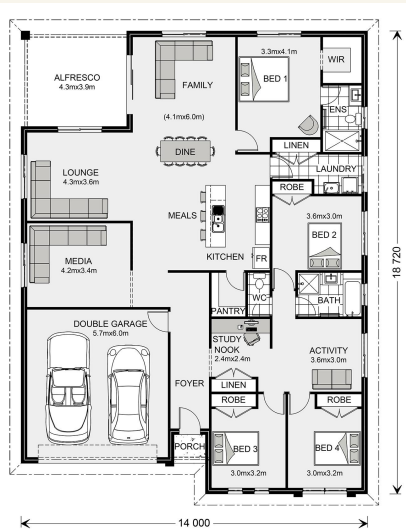
Call: 0400 028 926

Email: darren.odonnell@gjgardner.com.au

Call: 02 6931 0256

Email: wagga@gjgardner.com.au

Or visit gjgardner.com.au



*Images and photographs may depict fixtures, finishes and features either not supplied by G.J. Gardner Homes or not included in any price stated. These items include furniture, swimming pools, pool decks, fences, landscaping - including planter boxes, retaining walls, water features, pergolas, screens and decorative landscaping items such as fencing and outdoor kitchens and barbeques. For detailed home pricing, please talk to a new homes consultant.

Welcome **home.**

G.J. Gardner. HOMES