



From \$283,575* (incl GST)

lot 2, 29 Gilbert Crescent (900 m²)

Package includes*:

- + 900sqm block - in close proximity to Scots PGC College and 4km to cbd.
- + Town water/sewerage, and subject to soil test and engineering.
- + Classic brick exterior, mailbox, clothesline and 3 coat paint system.
- + Priced on 'M' soil type, 60sqm driveway and in a sought after location
- + Quality fencing on 3 sides, colorbond roofing and 2400mm ceilings.
- + For more information contact; Our G.J Gardner Team or Tiffany Cruice.

*Please speak to your New Homes Sales Consultants for full list of inclusions.

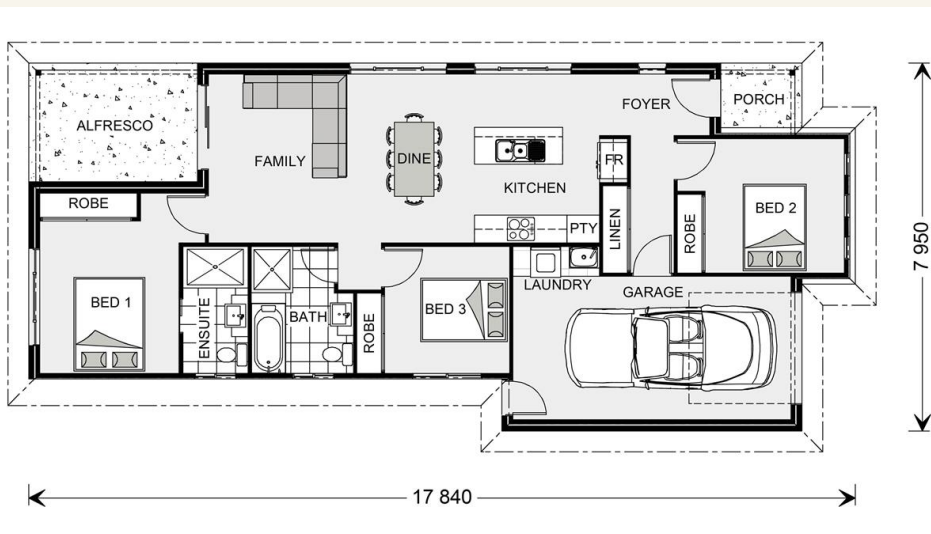


House and land package from \$283,575*

Address: 2, 29 Gilbert Crescent , Warwick

Inclusions:

- +
- +
- +
- +
- +
- +



*Images and photographs may depict fixtures, finishes and features either not supplied by G.J. Gardner Homes or not included in any price stated. These items include furniture, swimming pools, pool decks, fences, landscaping - including planter boxes, retaining walls, water features, pergolas, screens and decorative landscaping items such as fencing and outdoor kitchens and barbeques. For detailed home pricing, please talk to a new homes consultant.

Robina 125.

3 2.0 1

Itemised Floor Area	Area
Internal	90.60
Garage	22.30
Alfresco	9.40
Porch	2.50
Gross	124.80

Drop in for a chat today.

16-20 Project Street,
Warwick QLD 4370

Robina 125 - Metro Small

3 2 1

Give us a call or drop in for a chat today.

Office:

Warwick - Stanthorpe
16-20 Project Street, Warwick Queensland 4370
QBCC: 1130624

Call:

Email:

Call: (07) 4661 1422
Email: warwick@gjgardner.com.au
Or visit gjgardner.com.au