

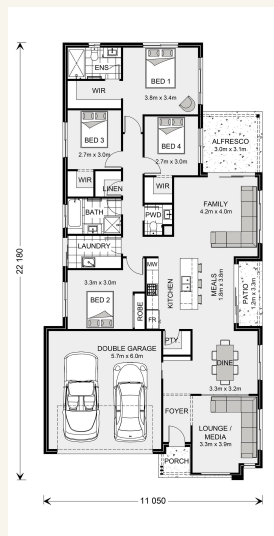


House and land package from \$496,820*

Address: 36 Regal Drive, Canungra

Inclusions:

- + Resort facade
- + Earthworks, retaining & steel posts
- + Floor coverings
- + Custom built cabinetry with soft closing doors & drawers
- + LED downlights throughout
- + Letterbox & Clothesline



*Images and photographs may depict fixtures, finishes and features either not supplied by G.J. Gardner Homes or not included in any price stated. These items include furniture, swimming pools, pool decks, fences, landscaping - including planter boxes, retaining walls, water features, pergolas, screens and decorative landscaping items such as fencing and outdoor kitchens and barbecues. For detailed home pricing, please talk to a new homes consultant.

Oceanside 212 - Element Series



Give us a call or drop in for a chat today.

Office:

Gold Coast North

Unit 1/2 Millennium Circuit, Helensvale QLD 4212

QBCC: 15151905

Hayley Somerfield

New Home Consultant

Call: 0432 114 051

Email: hayley.somerfield@gjgardner.com.au

Call: 07 5502 3642

Email: goldcoastnth@gjgardner.com.au

Or visit gjgardner.com.au

Welcome **home.**

G.J. Gardner. HOMES