

House & Land Package.



House and land package from \$351,810*

Address: 3A Shirreff Ave, Stawell

Inclusions:

- + Classic Facade
- + Carpet & Tiles
- + Brick Letterbox
- + Reverse cycle split system
- + Concrete driveway
- + Laundry Benchtop and base cupboards

Nova 170 - Express Series

3  2  2 

Give us a call or drop in for a chat today.

Office:

Ararat
92 Barkly Street, Ararat Vic 3377
Jacorey Pty Ltd, CDB-U 49694.

Cathy Jennings

New Home Consultant

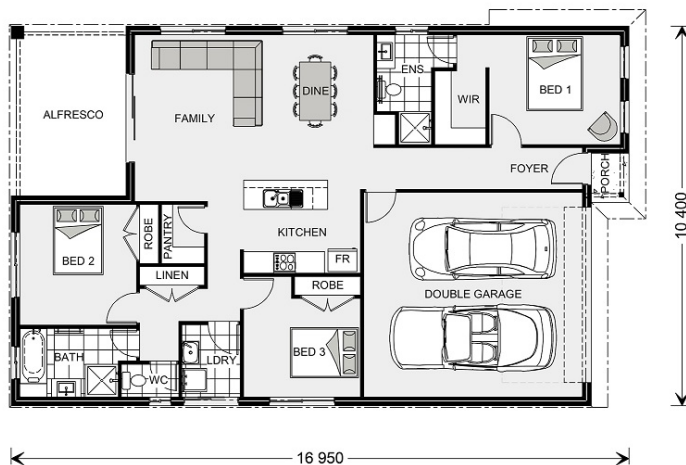
Call: +61419444781

Email: cathy.jennings@gjgardner.com.au

Call: 03 5352 3298

Email: ararat@gjgardner.com.au

Or visit gjgardner.com.au



*Images and photographs may depict fixtures, finishes and features either not supplied by G.J. Gardner Homes or not included in any price stated. These items include furniture, swimming pools, pool decks, fences, landscaping - including planter boxes, retaining walls, water features, pergolas, screens and decorative landscaping items such as fencing and outdoor kitchens and barbeques. For detailed home pricing, please talk to a new homes consultant.

Welcome **home.**

G.J. Gardner. **HOMES**