

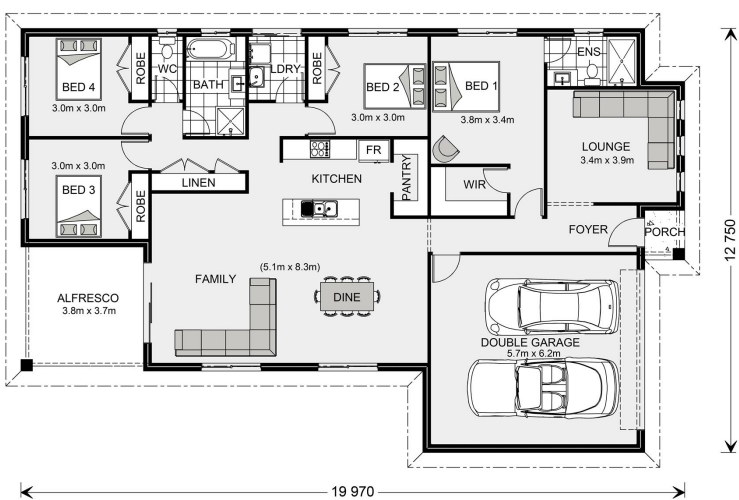


## House and land package from \$496,974\*

Address: 272, 34 Wexford Street (Ballymanus), Alfredton

### Inclusions:

- + H1 Waffle Pod Slab Included
- + 900mm Westinghouse Appliances
- + 255mm ceiling heights throughout
- + Concrete driveway and crossover
- + Dishlex stainless steel dishwasher
- + Allowance for Fencing



\*Images and photographs may depict fixtures, finishes and features either not supplied by G.J. Gardner Homes or not included in any price stated. These items include furniture, swimming pools, pool decks, fences, landscaping - including planter boxes, retaining walls, water features, pergolas, screens and decorative landscaping items such as fencing and outdoor kitchens and barbeques. For detailed home pricing, please talk to a new homes consultant.

## Woodridge 216 - Express Series

4 2 2

**Give us a call or drop in for a chat today.**

### Office:

Ballarat  
1/1021 Sturt St, Ballarat Vic 3350  
Ballarat Regional Developments Pty Ltd CDB-U  
50435

### David Hocking

Sales Consultant

Call: 0413 568 625

Email: david.hocking@gjgardner.com.au

Call: 03 5334 4099

Email: ballarat@gjgardner.com.au

Or visit [gjgardner.com.au](http://gjgardner.com.au)

Welcome **home.**

**G.J. Gardner.** HOMES