

# House & Land Package.



House and land package from \$426,900\*

Address: 429 Woodbridge Street, Killara

Inclusions:

- + House & Land
- + Heating & Cooling
- + Floor Coverings Throughout
- + LED Downlights & Electrical Upgrade Package
- + 900mm Westinghouse Appliances & Dishwasher
- + 2.55m Ceilings

Long Bay 220 - Element Series

4  2  2 

Give us a call or drop in for a chat today.

Office:

Wodonga

15A Stanley St, Wodonga VIC 3690

Huon Homes Pty Ltd, CDB-U 53693.

Ron Davis

New Home Consultant

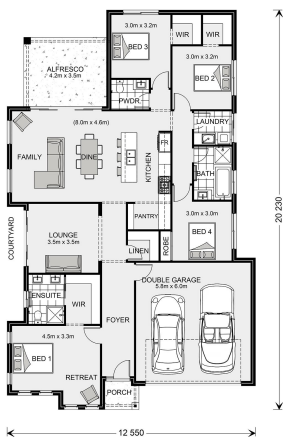
Call: 0455 947 484

Email: [ron.davis@gjgardner.com.au](mailto:ron.davis@gjgardner.com.au)

Call: 02 6056 8889

Email: [wodonga@gjgardner.com.au](mailto:wodonga@gjgardner.com.au)

Or visit [gjgardner.com.au](http://gjgardner.com.au)



\*Images and photographs may depict fixtures, finishes and features either not supplied by G.J. Gardner Homes or not included in any price stated. These items include furniture, swimming pools, pool decks, fences, landscaping - including planter boxes, retaining walls, water features, pergolas, screens and decorative landscaping items such as fencing and outdoor kitchens and barbeques. For detailed home pricing, please talk to a new homes consultant.

Welcome **home.**

G.J. Gardner. **HOMES**