

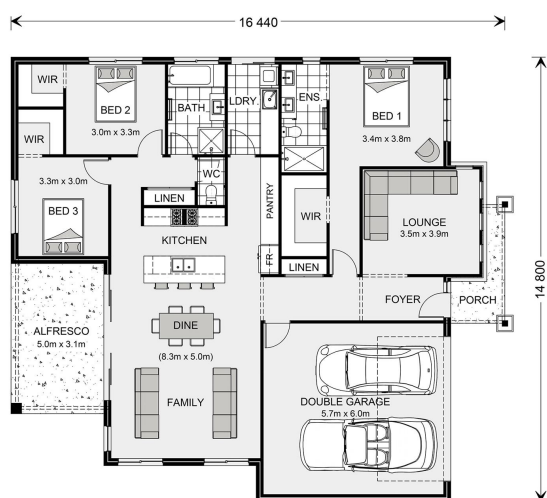


House and land package from \$426,000*

Address: 142 Plymouth Street, Wangaratta

Inclusions:

- + House & Land
- + Heating & Cooling
- + Floor Coverings Throughout
- + Driveway including crossover
- + Stainless Steel Cooking Appliances
- +



*Images and photographs may depict fixtures, finishes and features either not supplied by G.J. Gardner Homes or not included in any price stated. These items include furniture, swimming pools, pool decks, fences, landscaping - including planter boxes, retaining walls, water features, pergolas, screens and decorative landscaping items such as fencing and outdoor kitchens and barbeques. For detailed home pricing, please talk to a new homes consultant.

Glenview 210 - Element Series

3 2 2

Give us a call or drop in for a chat today.

Office:

Wodonga
15A Stanley St, Wodonga VIC 3690
Huon Homes Pty Ltd, CDB-U 53693.

Karen Reynolds

New Home Consultant

Call: 0403 549 666

Email: karen.reynolds@gjgardner.com.au

Call: 02 6056 8889

Email: wodonga@gjgardner.com.au

Or visit gjgardner.com.au

Welcome **home.**

G.J. Gardner. HOMES