

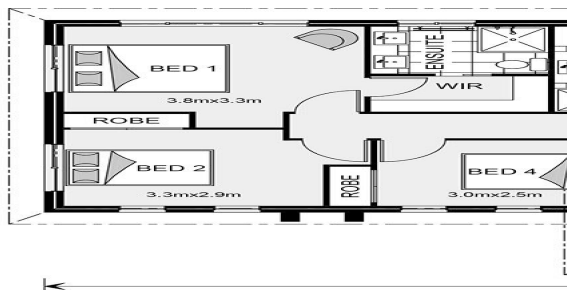


## House and land package from \$387,000\*

Address: 171 Premier Drive , Kingaroy

### Inclusions:

- + Designed for outdoor living
- + Alfresco
- + BBQ area
- + Kitchen with walk in Pantry
- + Lounge/ Media
- + Main bedroom with Ensuite



\*Images and photographs may depict fixtures, finishes and features either not supplied by G.J. Gardner Homes or not included in any price stated. These items include furniture, swimming pools, pool decks, fences, landscaping - including planter boxes, retaining walls, water features, pergolas, screens and decorative landscaping items such as fencing and outdoor kitchens and barbeques. For detailed home pricing, please talk to a new homes consultant.

### Stillwater 235 - Estate Series

4 2 2

**Give us a call or drop in for a chat today.**

#### Office:

Kingaroy  
1/36 Alford St, Kingaroy Qld 4610  
QBCC: 1236116

Call:

Email:

Call: 07 4163 6472

Email: [kingaroy@gjgardner.com.au](mailto:kingaroy@gjgardner.com.au)

Or visit [gjgardner.com.au](http://gjgardner.com.au)

Welcome **home.**

**G.J. Gardner.** **HOMES**