



## House and land package from \$374,533\*

Address: 184 Premier Drive , Kingaroy

### Inclusions:

- + Open plan living
- + Optional Alfresco
- + Walk in Pantry
- + Activity area
- + Four bedroom home
- + Ensuite to main bedroom

## Yarraman - Homestead Series

4 2 2

**Give us a call or drop in for a chat today.**

### Office:

Kingaroy  
1/36 Alford St, Kingaroy Qld 4610  
QBCC: 1236116

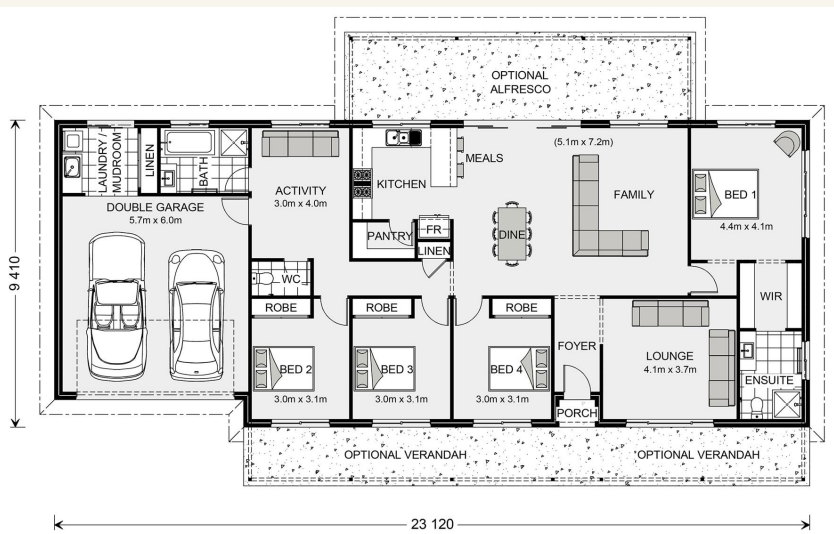
### Call:

Email:

Call: 07 4163 6472

Email: [kingaroy@gjgardner.com.au](mailto:kingaroy@gjgardner.com.au)

Or visit [gjgardner.com.au](http://gjgardner.com.au)



\*Images and photographs may depict fixtures, finishes and features either not supplied by G.J. Gardner Homes or not included in any price stated. These items include furniture, swimming pools, pool decks, fences, landscaping - including planter boxes, retaining walls, water features, pergolas, screens and decorative landscaping items such as fencing and outdoor kitchens and barbeques. For detailed home pricing, please talk to a new homes consultant.

Welcome **home.**

**G.J. Gardner.** HOMES