



House and land package from \$377,000*

Address: 169 Premier Drive, Kingaroy

Inclusions:

- + Wide frontage home
- + Alfresco
- + Open plan living
- + Ensuite to main bedroom
- + Zoned living
- + Prestige acreage block

Rothbury 234 - Estate Series

4 2 2

Give us a call or drop in for a chat today.

Office:

Kingaroy
1/36 Alford St, Kingaroy Qld 4610
QBCC: 1236116

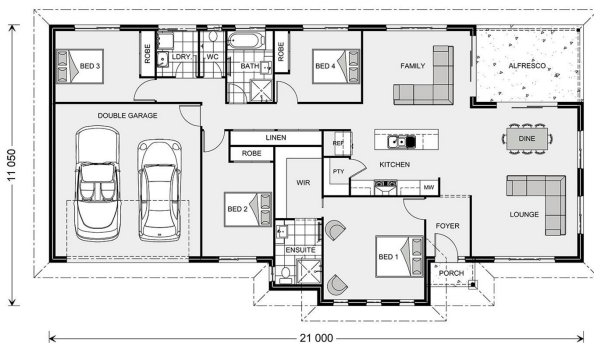
Call:

Email:

Call: 07 4163 6472

Email: kingaroy@gjgardner.com.au

Or visit gjgardner.com.au



*Images and photographs may depict fixtures, finishes and features either not supplied by G.J. Gardner Homes or not included in any price stated. These items include furniture, swimming pools, pool decks, fences, landscaping - including planter boxes, retaining walls, water features, pergolas, screens and decorative landscaping items such as fencing and outdoor kitchens and barbeques. For detailed home pricing, please talk to a new homes consultant.

Welcome **home.**

G.J. Gardner. HOMES