

# House & Land Package.



## House and land package from \$499,000\*

Address: 4 Valentina Drive, Darley

### Inclusions:

- + A few of the inclusions listed below
- + Site Costs
- + Reece Fixtures & Fittings with Westinghouse Appliances
- + Metal Roofing and Alfresco
- + Concrete Driveway, Remote Garage Door
- + Flyscreens to all openable windows + much more

## Brighton 175 - Express Series

4 2 2

**Give us a call or drop in for a chat today.**

### Office:

Bacchus Marsh  
187 Main Street, Bacchus Marsh Vic 3340  
CDBU-57330

David Buchanan

New Home Consultant

Call: 0436 013 223

Email: david.buchanan@gjgardner.com.au

Louise Newton

New Home Consultant

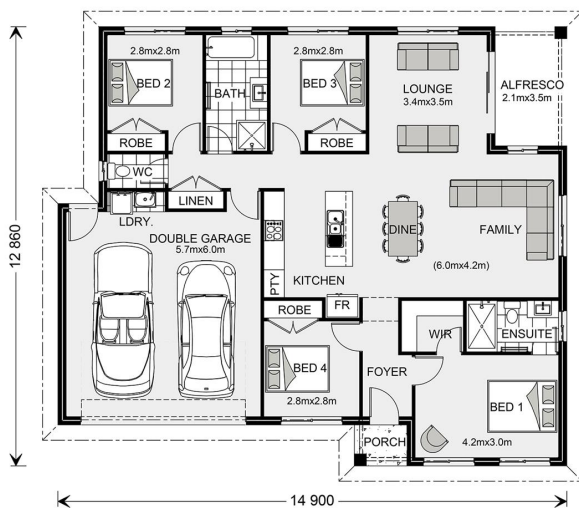
Call: 0418 229 019

Email: louise.newton@gjgardner.com.au

Call: 5366 1550

Email: bacchusmarsh@gjgardner.com.au

Or visit [gjgardner.com.au](http://gjgardner.com.au)



\*Images and photographs may depict fixtures, finishes and features either not supplied by G.J. Gardner Homes or not included in any price stated. These items include furniture, swimming pools, pool decks, fences, landscaping - including planter boxes, retaining walls, water features, pergolas, screens and decorative landscaping items such as fencing and outdoor kitchens and barbeques. For detailed home pricing, please talk to a new homes consultant.

Welcome **home.**

**G.J. Gardner.** **HOMES**