



## House and land package from \$518,000\*

Address: 29 Mountain View Circuit , Mountain View

### Inclusions:

- + Concrete Slab, Brick, Weatherboard & Tile Constructions
- + All Floor and Window Coverings
- + Ceiling Fans, LED Lights, Double Power Points and Smeg Appliances
- + Flyscreens, TV Antenna, Letterbox, Clothesline
- + Tiled Porch and Alfresco
- + All Site Costs & Council Fees Included. Fixed Price Contract.

## Mountain Views Estate 237 - Estate Series

4 2 2

**Give us a call or drop in for a chat today.**

### Office:

Grafton  
41-47 Fitzroy St, Grafton NSW 2460

Roy Allen

Sales Consultant

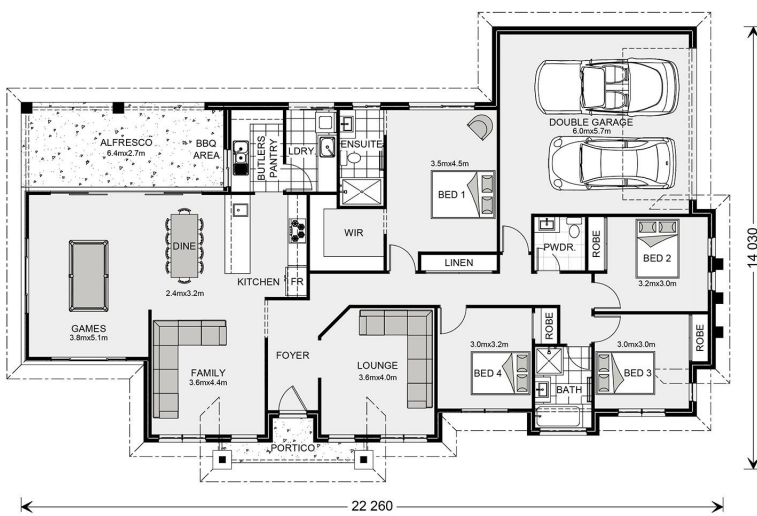
Call: 0448 425 608

Email: [roy.allen@gjgardner.com.au](mailto:roy.allen@gjgardner.com.au)

Call: 02 6642 8711

Email: [grifton@gjgardner.com.au](mailto:grifton@gjgardner.com.au)

Or visit [gjgardner.com.au](http://gjgardner.com.au)



\*Images and photographs may depict fixtures, finishes and features either not supplied by G.J. Gardner Homes or not included in any price stated. These items include furniture, swimming pools, pool decks, fences, landscaping - including planter boxes, retaining walls, water features, pergolas, screens and decorative landscaping items such as fencing and outdoor kitchens and barbecues. For detailed home pricing, please talk to a new homes consultant.

Welcome **home.**

**G.J. Gardner.** HOMES