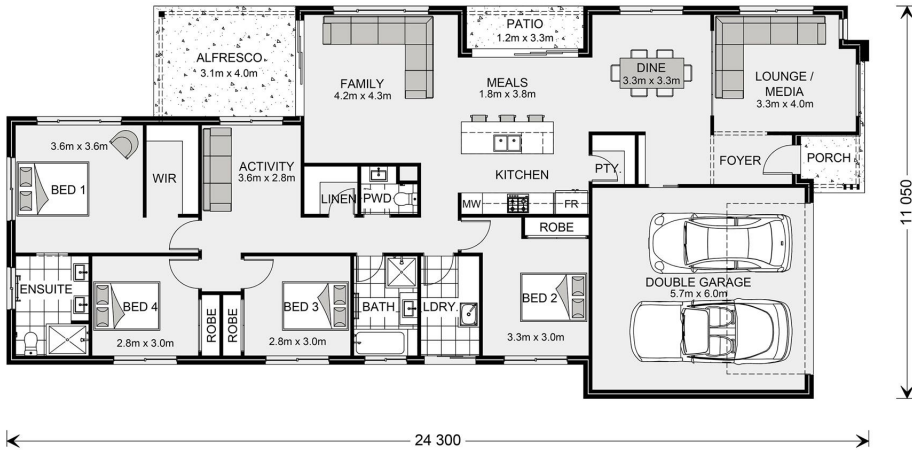


House and land package from \$575,000*

Address: 6 Kerang St, Surfside

Inclusions:

- + Standard GJ Gardner Inclusions
- + Standard Site and Basix inclusions
- + Statutory and General Fees
- + Vinyl Planks on Main Floors
- + Carpet in Bedrooms
- + Heating and Cooling



*Images and photographs may depict fixtures, finishes and features either not supplied by G.J. Gardner Homes or not included in any price stated. These items include furniture, swimming pools, pool decks, fences, landscaping - including planter boxes, retaining walls, water features, pergolas, screens and decorative landscaping items such as fencing and outdoor kitchens and barbeques. For detailed home pricing, please talk to a new homes consultant.

Oceanside 230 - Element Series

4 2 2

Give us a call or drop in for a chat today.

Office:

Batemans Bay

3 Beach Rd, Batemans Bay NSW 2536

Emily Zahra

New Home Consultant

Call: 0244721628

Email: emily.zahra@gjgardner.com.au

Katrina Fogarty

New Home Consultant

Call: 02 4472 1628

Email: katrina.fogarty@gjgardner.com.au

Call: 02 4472 1628

Email: batemansbay@gjgardner.com.au

Or visit gjgardner.com.au

Welcome **home.**

G.J. Gardner. **HOMES**