



House and land package from \$536,500*

Address: 27 Sanctuary Springs, Leopold

Inclusions:

- + Executive Facade
- + Carpet & Tiles throughout
- + Double Glazed Windows & Sliding Doors with Fly Screens
- + 900mm Westinghouse Appliances
- + 450mm Eaves & Brick Infill above windows
- + Under Roof Alfresco

Woodridge 216 - Express Series

4 2 2

Give us a call or drop in for a chat today.

Office:

Geelong
228 Moorabool St, Geelong Vic 3220
Oakwood Plains Pty Ltd, CDB-U 54088.

Marcus Illingworth

New Home Consultant

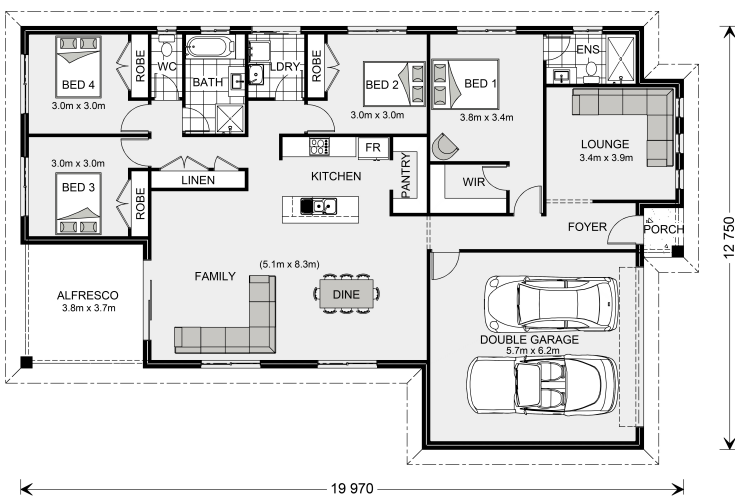
Call: 0410 308 722

Email: marcus.illingworth@gjgardner.com.au

Call: 03 5221 1447

Email: geelong@gjgardner.com.au

Or visit gjgardner.com.au



*Images and photographs may depict fixtures, finishes and features either not supplied by G.J. Gardner Homes or not included in any price stated. These items include furniture, swimming pools, pool decks, fences, landscaping - including planter boxes, retaining walls, water features, pergolas, screens and decorative landscaping items such as fencing and outdoor kitchens and barbeques. For detailed home pricing, please talk to a new homes consultant.

Welcome **home.**

G.J. Gardner. HOMES