

The Sorrento.



Allow yourself to imagine the lifestyle you've always wanted, in the home you deserve!

Looking for a home design that takes advantage of a stunning ocean or bush view? The Sorrento 261 has been carefully tailored to provide relaxed family living while maximising your site's outlook.

The master suite and open-plan main living area are located on the upper level, with a rear-facing balcony and expansive use of glass to capture natural light and breezes. An alfresco area and formal lounge on the lower level offer an abundance of living and entertaining space. You'll also find three good-sized bedrooms, a central bathroom, laundry and double garage – everything the growing family needs.

The Sorrento offers individually crafted façades that will inspire you by providing a choice of homes that reflect your personal lifestyle and preferences.

Get in touch today!

Call 132 789 or visit gjgardner.com.au

BEACH



CLASSIC



Sorrento facade options.

G.J. Gardner's tailored façades give you the opportunity to personalise your home. With Beach, Classic and Resort façades to choose from, you can bring your home to life, making it as individual as you are!



RESORT



Sorrento 261.

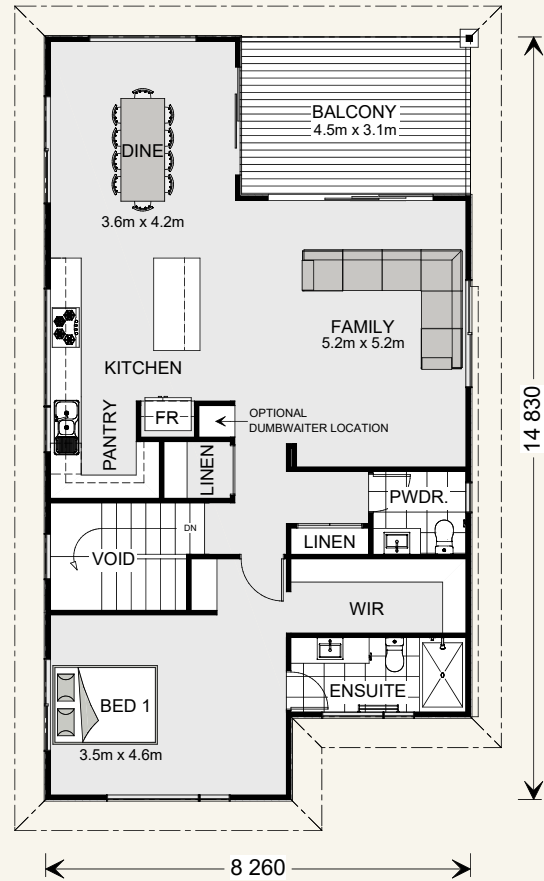
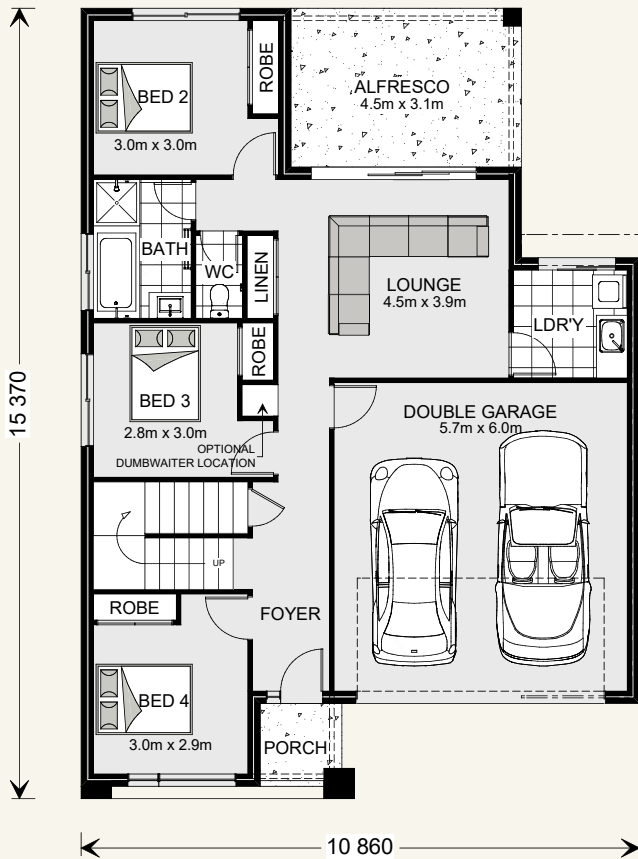


Suits standard lot width: 14m +

Floor sizes - Resort Façade

Living: 187.5 m²
 Garage: 37.1 m²
 Alfresco: 13.8 m²

Porch: 2.6 m²
 Void: 5.9 m²
 Balcony: 13.8 m²
Total: 260.7 m²



Features:

- + Four bedrooms, three bathrooms
- + Two large living zones – one on each level
- + Rear-facing balcony and covered alfresco
- + Designed to fit on 14m minimum lot widths

Get in touch today!
 Call 132 789 or visit gjjardner.com.au

G.J. Gardner. **HOMES**



Images may depict fixtures, finishes and features not supplied by G.J. Gardner Homes. These items include planter boxes, retaining walls, water features, pergolas, screens and decorative landscaping items such as fencing and outdoor kitchens and barbecues.

G.J. Gardner. **HOMES**