

The Nova.



Your trusted local builder.
Call 132 789 or visit gjgardner.com.au



Locally
Owned



Australia's Best National Home
Builder on Product Review



Fixed Price
Contracts



Facts Up
Front

BEACH



MANOR



CLASSIC



EXECUTIVE



You'll be surprised at how many good things come in this smaller package.




Perfectly suited to urban or estate living, the Nova 170 packs a lot of features into a compact floor plan. The home includes a private, ensuited master bedroom, an open-plan kitchen with breakfast bar and walk-in pantry, and a spacious living and dining area opening onto a covered alfresco. Bedrooms 2 and 3 share a stylish main bathroom with separate water closet, and there's even a double garage.



Key Features:

- + Compact 170-square metre floorplan
- + Three bedrooms
- + Ensuite & main bathroom with separate WC
- + Stylish kitchen with breakfast bar
- + Double garage
- + Choice of eight facades

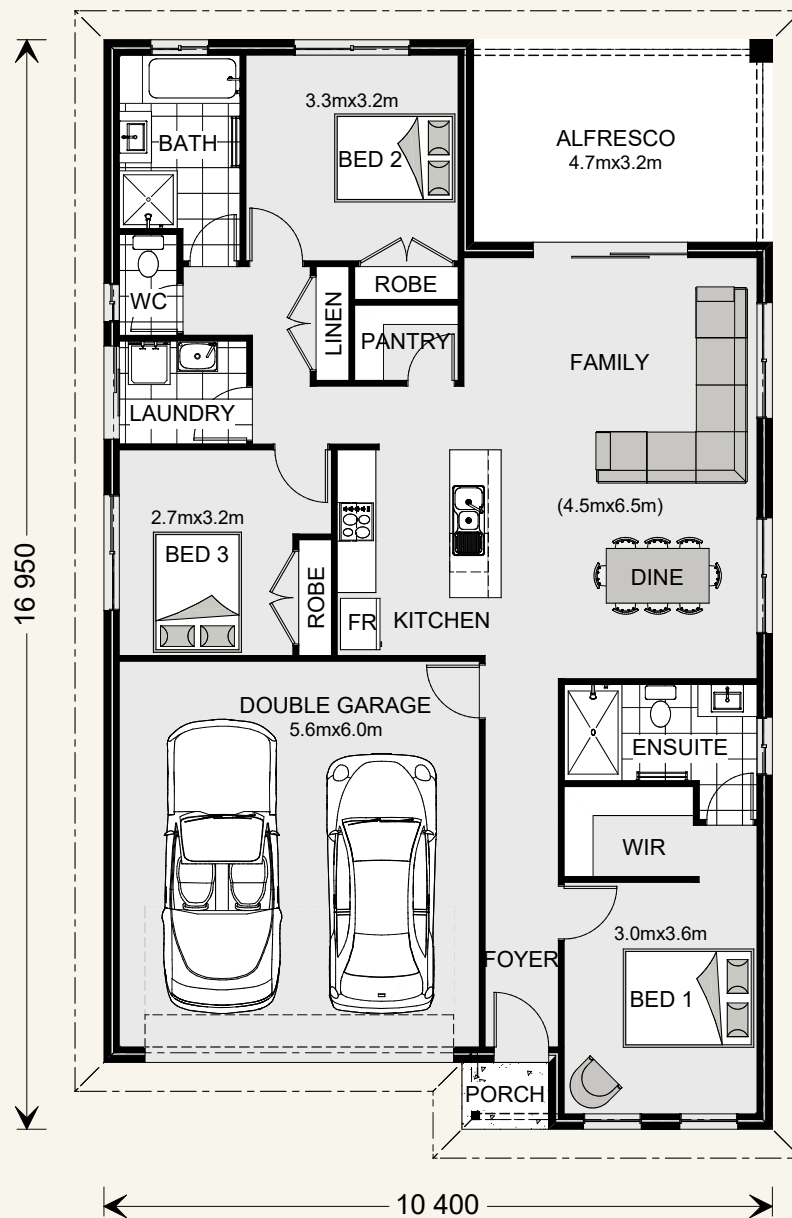
Nova 170.

3  2  2 
 Suits standard lot width: 12.5m +




Floor sizes - Classic Façade

Living: 118.1 m²
 Garage: 36.4 m²

Alfresco: 14.6 m²
 Porch: 1.4 m²
Total: 170.5 m²



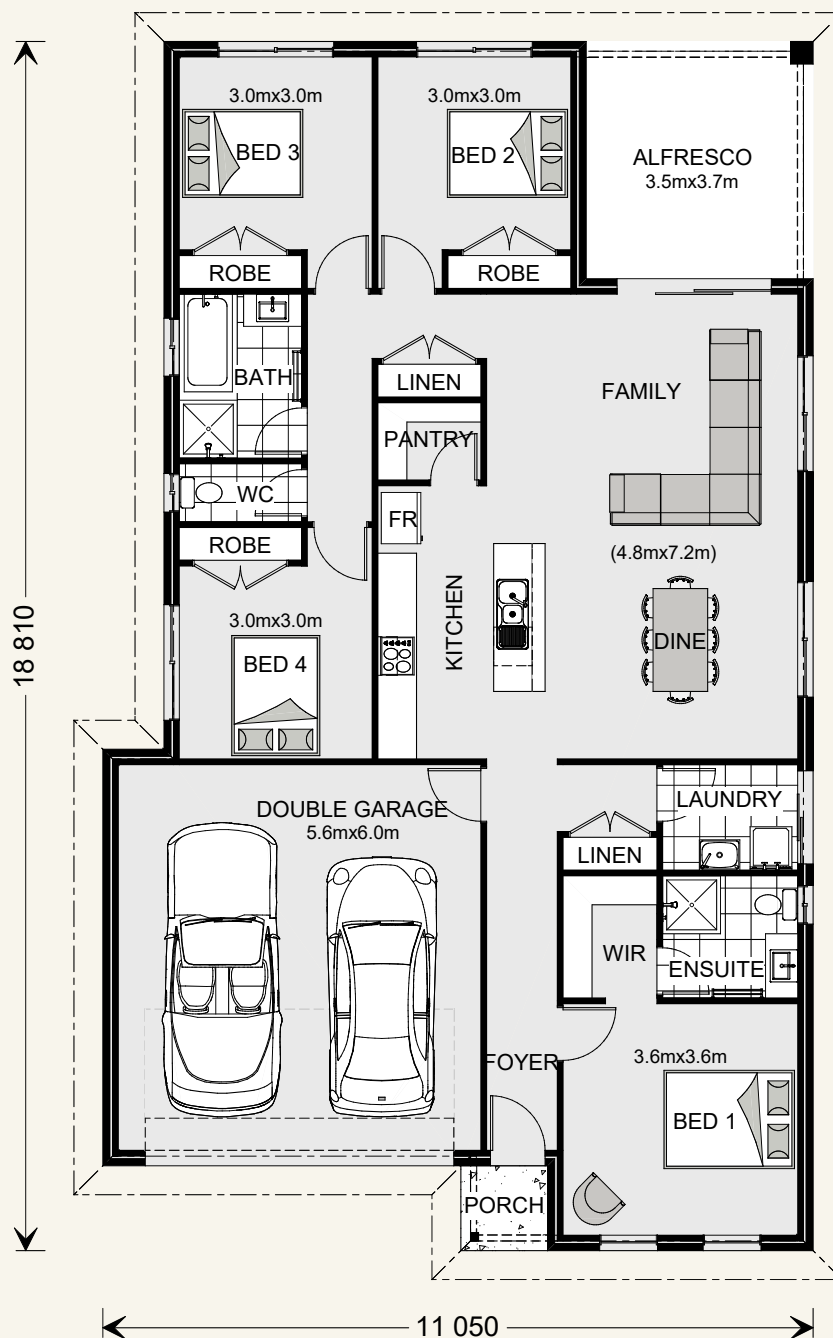
Nova 190.

4  2  2 
 Suits standard lot width: 12.5m +

Floor sizes - Classic Façade

Living: 138.3 m²
 Garage: 36.9 m²

Alfresco: 13.0 m²
 Porch: 1.8 m²
Total: 190.0 m²



Get in touch with an award-winning local builder today!

 132 789

 gjgardner.com.au



— WINNER —

**Australia's Best
National Home Builder
2016 and 2017**

PRODUCT  REVIEW
.COM.AU



*Based upon Australia Major Builder reviews received on productreview.com.au from 1 January 2016 – 30 November 2017. Images may depict fixtures, finishes and features not supplied by G.J. Gardner Homes. These items include planter boxes, retaining walls, water features, pergolas, screens and decorative landscaping items such as fencing and outdoor kitchens and barbecues.

Get in touch today!

Call 132 789 or visit gjgardner.com.au

G.J. Gardner. HOMES