

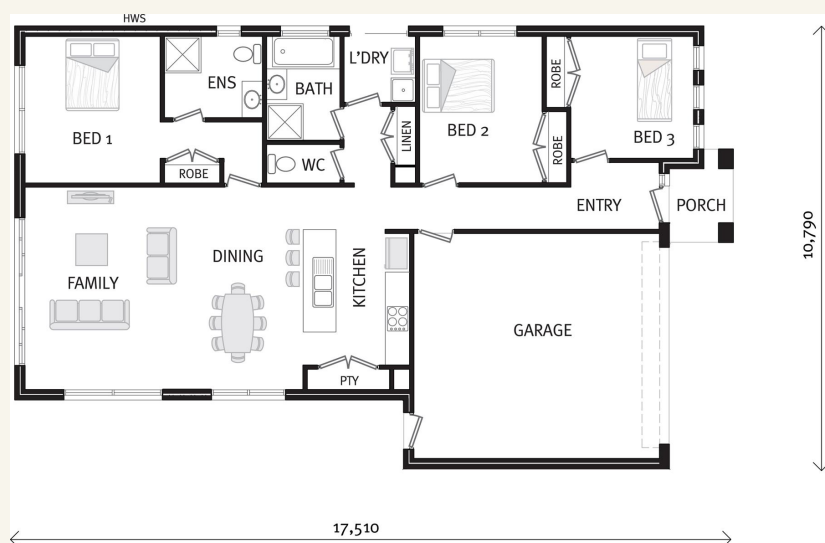


## House and land package from \$517,099\*

**Address:** 81 Flathead Court, San Remo

### Inclusions:

- + 40m<sup>2</sup> Plain Concrete Driveway
- + Floor Coverings Throughout
- + Split System Heating and Cooling
- + Clothesline and Letterbox
- + Window and Sliding Door Flyscreens
- + Dishwasher



\*Images and photographs may depict fixtures, finishes and features either not supplied by G.J. Gardner Homes or not included in any price stated. These items include furniture, swimming pools, pool decks, fences, landscaping - including planter boxes, retaining walls, water features, pergolas, screens and decorative landscaping items such as fencing and outdoor kitchens and barbeques. For detailed home pricing, please talk to a new homes consultant.

### Ascot - 2 sizes

3 2 2

**Give us a call or drop in for a chat today.**

#### Office:

Bass Coast - Phillip Island  
1/219 Settlement Rd, Cowes Vic 3922  
Urban Rescue Pty Ltd, CDB-U 48925.

**Tim Maurizio**

**New Home Consultant**

**Call:** 0499988797

**Email:** [tim.maurizio@gjgardner.com.au](mailto:tim.maurizio@gjgardner.com.au)

**Call:** 03 5952 2150

**Email:** [basscoast@gjgardner.com.au](mailto:basscoast@gjgardner.com.au)

**Or visit** [gjgardner.com.au](http://gjgardner.com.au)

Welcome **home.**

**G.J. Gardner.** **HOMES**