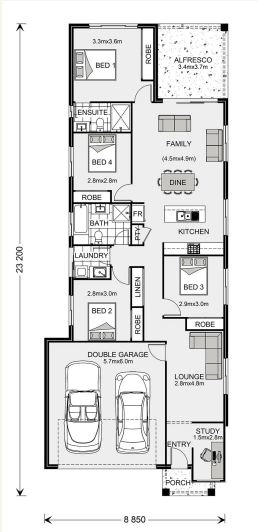


House and land package from \$472,900*

Address: 50 209 Morris Road , Rothwell "Promenade"

Inclusions:

- +
- +
- +
- +
- +
- +



*Images and photographs may depict fixtures, finishes and features either not supplied by G.J. Gardner Homes or not included in any price stated. These items include furniture, swimming pools, pool decks, fences, landscaping - including planter boxes, retaining walls, water features, pergolas, screens and decorative landscaping items such as fencing and outdoor kitchens and barbeques. For detailed home pricing, please talk to a new homes consultant.

Newhaven 182 - Metro Series

4 2 2

Give us a call or drop in for a chat today.

Office:

Brisbane North

7/104 Gympie Rd, STRATHPINE QLD 4500

QBCC: 1052162

Tony LOCKLAND

New Home Consultant

Call: 0413 523 288

Email: tony.lockland@gjgardner.com.au

Call: 07 3881 0311

Email: bnenorth@gjgardner.com.au

Or visit gjgardner.com.au

Welcome **home.**

G.J. Gardner. HOMES