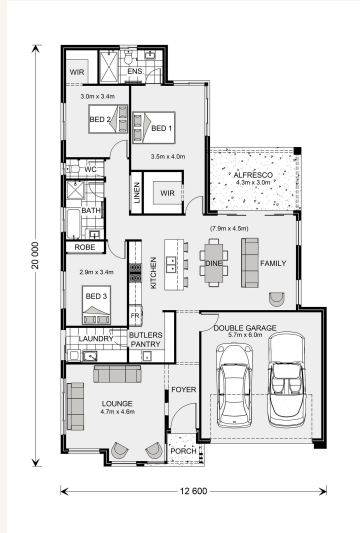


House and land package from \$470,152*

Address: 251, 34 Tallowwood Drive, Gunnedah

Inclusions:

- + Land Price \$125,000 For Private Sale by Owner
- + 60m² Plain Concrete Driveway Allowance
- + Stay Warm in Winter with Daikin Fully Ducted Reverse Cycle Air Con
- + Enjoy Your Gourmet Kitchen with SMEG Appliances
- + 20mm Stone Benchtops in the Kitchen and Butlers Pantry
- + Fully Fenced Block!



*Images and photographs may depict fixtures, finishes and features either not supplied by G.J. Gardner Homes or not included in any price stated. These items include furniture, swimming pools, pool decks, fences, landscaping - including planter boxes, retaining walls, water features, pergolas, screens and decorative landscaping items such as fencing and outdoor kitchens and barbeques. For detailed home pricing, please talk to a new homes consultant.

Elanora 205 - Element Series

3  2  2 

Give us a call or drop in for a chat today.

Office:

Tamworth

13A The Ringers Rd, Tamworth, Tamworth NSW 2340

229565C

Cindy Padmos

New Home Consultant

Call: 0402 141 052

Email: cindy.padmos@gjgardner.com.au

Call: 02 6765 2634

Email: tamworth@gjgardner.com.au

Or visit gjgardner.com.au

Welcome **home.**

G.J. Gardner. **HOMES**