

# House & Land Package.

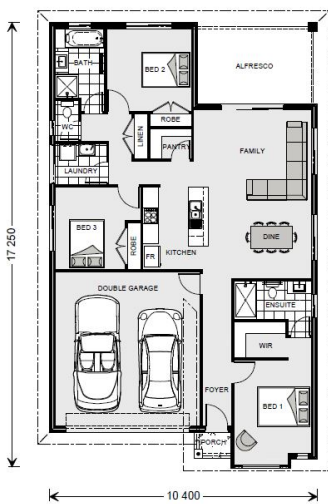


House and land package from \$343,250\*

Address: 67 Crow Street, Baranduda

Inclusions:

- + House & Land
- + Heating & Cooling
- + Floor Coverings Throughout
- + LED Downlights & Electrical Upgrade Package
- + 900mm Westinghouse Appliances & Dishwasher
- + 2.55m Ceilings



\*Images and photographs may depict fixtures, finishes and features either not supplied by G.J. Gardner Homes or not included in any price stated. These items include furniture, swimming pools, pool decks, fences, landscaping - including planter boxes, retaining walls, water features, pergolas, screens and decorative landscaping items such as fencing and outdoor kitchens and barbeques. For detailed home pricing, please talk to a new homes consultant.

**Nova 170 - Express Series**

3  2  2 

**Give us a call or drop in for a chat today.**

Office:

Wodonga

15A Stanley St, Wodonga VIC 3690

Huon Homes Pty Ltd, CDB-U 53693.

Jade Carter

New Home Consultant

Call: 0408 371 009

Email: [jade.carter@gjgardner.com.au](mailto:jade.carter@gjgardner.com.au)

Call: 02 6056 8889

Email: [wodonga@gjgardner.com.au](mailto:wodonga@gjgardner.com.au)

Or visit [gjgardner.com.au](http://gjgardner.com.au)

Welcome **home.**

**G.J. Gardner.** **HOMES**