



House and land package from \$419,900*

Address: 429 Woodbridge Street, Killara

Inclusions:

- + House & Land
- + Heating & Cooling
- + Floor Coverings Throughout
- + LED Downlights & Electrical Upgrade Package
- + 900mm Westinghouse Appliances & Dishwasher
- + 2.55m Ceilings

Long Bay 220 - Element Series

4 2 2

Give us a call or drop in for a chat today.

Office:

Wodonga
15A Stanley St, Wodonga VIC 3690
Huon Homes Pty Ltd, CDB-U 53693.

Jade Carter

New Home Consultant

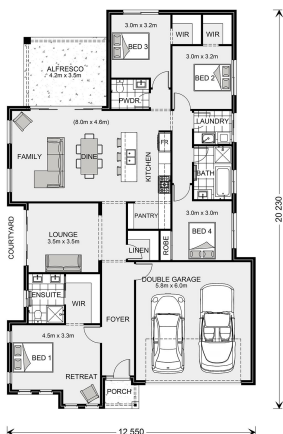
Call: 0408 371 009

Email: jade.carter@gjgardner.com.au

Call: 02 6056 8889

Email: wodonga@gjgardner.com.au

Or visit gjgardner.com.au



*Images and photographs may depict fixtures, finishes and features either not supplied by G.J. Gardner Homes or not included in any price stated. These items include furniture, swimming pools, pool decks, fences, landscaping - including planter boxes, retaining walls, water features, pergolas, screens and decorative landscaping items such as fencing and outdoor kitchens and barbeques. For detailed home pricing, please talk to a new homes consultant.

Welcome **home.**

G.J. Gardner. HOMES