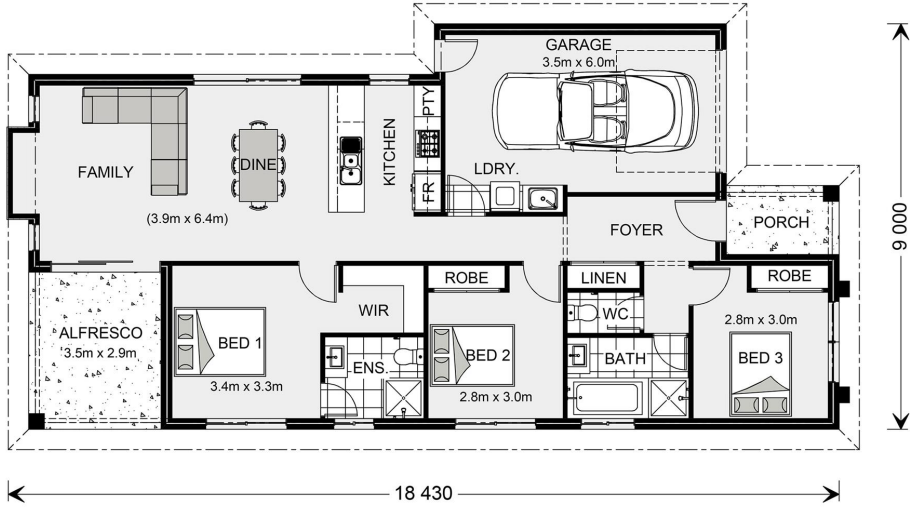


# House and land package from \$494,975\*

Address: 2, 9 Hayman Street, Portarlington

Inclusions:

- +
- +
- +
- +
- +
- +



\*Images and photographs may depict fixtures, finishes and features either not supplied by G.J. Gardner Homes or not included in any price stated. These items include furniture, swimming pools, pool decks, fences, landscaping - including planter boxes, retaining walls, water features, pergolas, screens and decorative landscaping items such as fencing and outdoor kitchens and barbeques. For detailed home pricing, please talk to a new homes consultant.

## Armadale 142 - Element Series

3 2 1

**Give us a call or drop in for a chat today.**

**Office:**

Geelong

228 Moorabool St, Geelong Vic 3220

Oakwood Plains Pty Ltd, CDB-U 54088.

**Ron Mortimer**

New Home Consultant

Call: 0423 233 688

Email: [ron.mortimer@gjgardner.com.au](mailto:ron.mortimer@gjgardner.com.au)

Call: 03 5221 1447

Email: [geelong@gjgardner.com.au](mailto:geelong@gjgardner.com.au)

Or visit [gjgardner.com.au](http://gjgardner.com.au)

Welcome **home.**

**G.J. Gardner.** HOMES