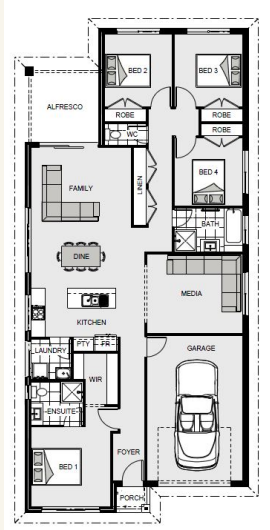


## House and land package from \$713,500\*

Address: Lot 1074 / 40-46 Kelly Street, Austral (Austral Green)

### Inclusions:

- + Classic Facade
- + Standard Site Costs, Council Fees & BASIX
- + Designer Package
- + Fixed Price until 1st July 2020
- + House and Land subject to two separate contracts
- +



\*Images and photographs may depict fixtures, finishes and features either not supplied by G.J. Gardner Homes or not included in any price stated. These items include furniture, swimming pools, pool decks, fences, landscaping - including planter boxes, retaining walls, water features, pergolas, screens and decorative landscaping items such as fencing and outdoor kitchens and barbeques. For detailed home pricing, please talk to a new homes consultant.

## Pacific 185 - Express Series

4 2 2

**Give us a call or drop in for a chat today.**

### Office:

Sydney - Liverpool  
246 Edmondson Ave, Austral NSW 2179  
244464C

Gonzalo Valenzuela

New Home Consultant

Call: 0411 228 722

Email: [gonzalo.valenzuela@gjgardner.com.au](mailto:gonzalo.valenzuela@gjgardner.com.au)

Call: 02 9606 8697

Email: [liverpool@gjgardner.com.au](mailto:liverpool@gjgardner.com.au)

Or visit [gjgardner.com.au](http://gjgardner.com.au)

Welcome **home.**

**G.J. Gardner.** **HOMES**