

# House & Land Package.



House and land package from \$426,500\*

Address: 29 - 32 Ontario Ave, Mildura

Inclusions:

- + Carpet & Tiling to Entire Home
- + Ducted Evap Air Con + Ducted Nat Gas Heating
- + Dishwasher & Garage Remote
- + Cloths Line & Gates
- + Driveways, Paths & Perimeter Fencing Allowance
- + Enjoy this exciting new Lake Park estate

**Nova 170 - Express Series**

3  2  2 

**Give us a call or drop in for a chat today.**

Office:

Mildura

54 Lime Ave, Mildura Vic 3500

Estilo Pty Ltd, CDB-U 49930.

Dennis McPhee

Custom Home Consultant

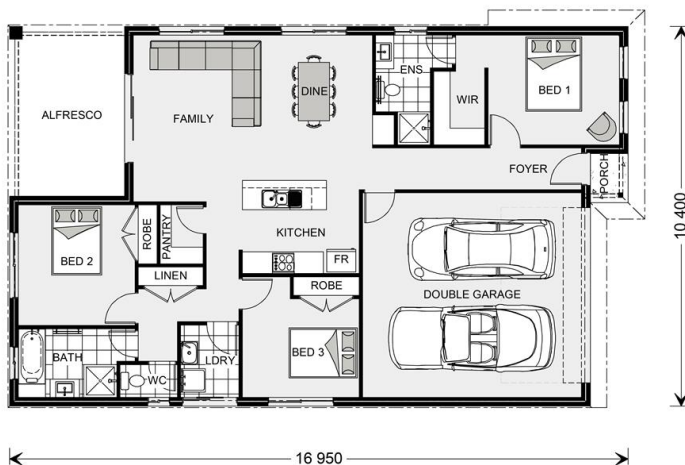
Call: 0427 237 860

Email: [dennis.mcphee@gjgardner.com.au](mailto:dennis.mcphee@gjgardner.com.au)

Call: 03 5023 1199

Email: [mildura@gjgardner.com.au](mailto:mildura@gjgardner.com.au)

Or visit [gjgardner.com.au](http://gjgardner.com.au)



\*Images and photographs may depict fixtures, finishes and features either not supplied by G.J. Gardner Homes or not included in any price stated. These items include furniture, swimming pools, pool decks, fences, landscaping - including planter boxes, retaining walls, water features, pergolas, screens and decorative landscaping items such as fencing and outdoor kitchens and barbeques. For detailed home pricing, please talk to a new homes consultant.

Welcome **home.**

**G.J. Gardner.** **HOMES**