

# Brighton.



## 195 Manor facade.

Images may depict landscaping, fences and upgraded fixtures, features or finishes which are not included in the prices stated. For availability and pricing of these items please discuss with your new home consultant.

### **The Brighton is a 4 bedroom home with plenty of entertaining space ideal for wider blocks with shorter depth.**

The foyer opens into the open plan living area which includes 2 living areas and an alfresco creating a feel of openness. This area is a great space for entertaining family and friends.

The generous master bedroom located at the front of the home includes a walk in wardrobe and ensuite. With the fourth bedroom located separately to the remaining 2 bedrooms it acts as an ideal space for a guest bedroom.

The Brighton Designs offer individually crafted facades that will inspire you by providing a choice of homes that reflect your personal lifestyle and preferences.

Welcome **home.**

**G.J. Gardner.** HOMES

## Brighton 195.



### FEATURES

- + 4 bedrooms
- + Ensuite, and walk in robe to master bedroom
- + Kitchen
- + Walk in pantry
- + Family room
- + Dining room
- + Lounge room
- + Alfresco
- + Double garage



Brighton 195 Classic facade floorplan

### SPECIFICATIONS

<b>Living:</b>	142.9 sq.m	15.36 sq
<b>Garage:</b>	37.1 sq.m	3.98 sq
<b>Alfresco:</b>	12.1 sq.m	1.30 sq
<b>Porch:</b>	2.0 sq.m	0.21 sq
<b>Total:</b>	194.1 sq.m	20.87 sq

### TOTAL AREA

**Width:** 16.00 m  
**Length:** 12.80 m

### NOTES

---



---



---



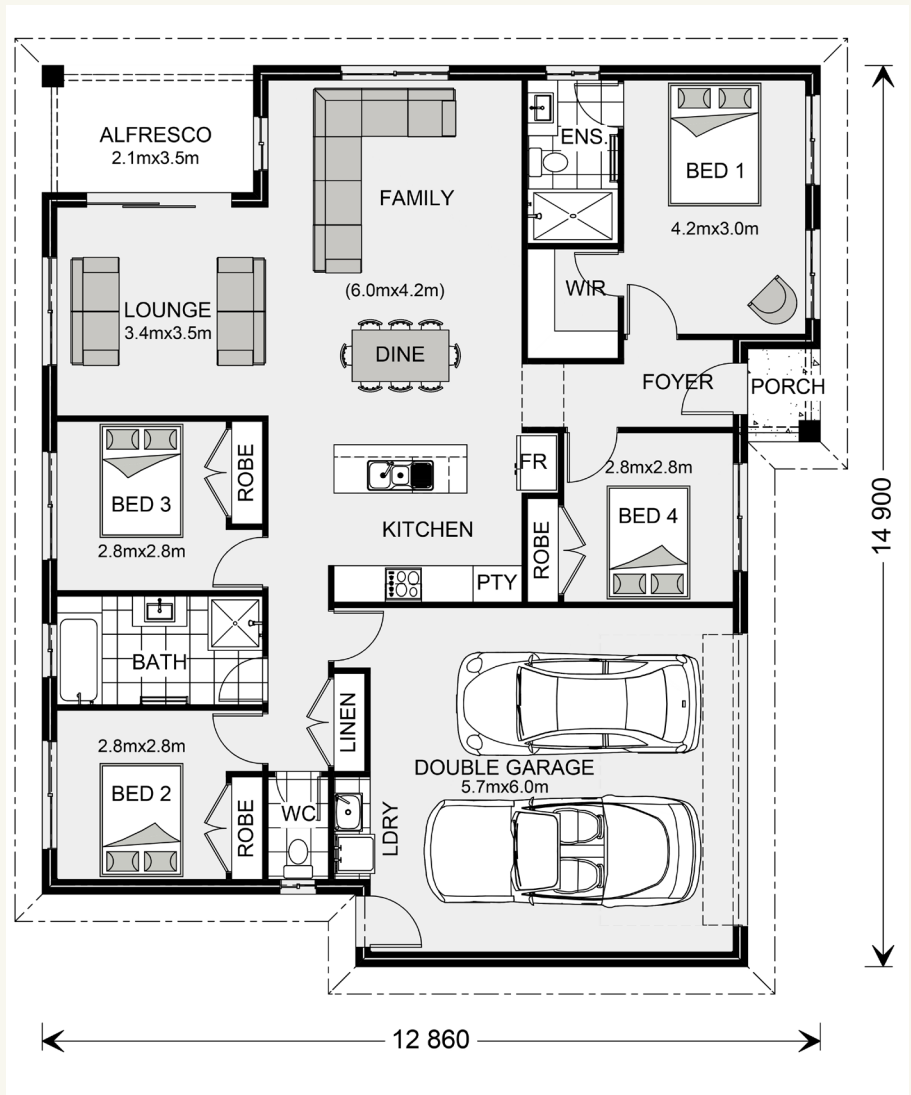
---

## Brighton 175.

4  2  2 

### FEATURES

- + 4 bedrooms
- + Ensuite, and walk in robe to master bedroom
- + Kitchen
- + Family room
- + Dining room
- + Lounge room
- + Alfresco
- + Double garage



Brighton 175 Classic facade floorplan

### SPECIFICATIONS

<b>Living:</b>	127.9 sqm	13.90 sq
<b>Garage:</b>	38.0 sqm	4.13 sq
<b>Alfresco:</b>	7.3 sqm	0.79 sq
<b>Porch:</b>	1.8 sqm	0.19 sq
<b>Total:</b>	175.0 sqm	19.02 sq

### TOTAL AREA

**Width:** 14.90 m

**Length:** 12.86 m

### NOTES

---



---



---



---

---

## Brighton facade options.

G.J. Gardner's tailored facades give you the opportunity to personalise your home. With Executive, Classic, Resort, Urban, Traditional and Beach facades to choose from, you can bring your home to life, making it as individual as you are!

195 EXECUTIVE FACADE



195 RESORT FACADE



195 TRADITIONAL FACADE



Images may depict fixtures, finishes and features not supplied by G.J. Gardner Homes. These items include planter boxes, retaining walls, water features, pergolas, screens and decorative landscaping items such as fencing and outdoor kitchens and barbecues.

195 CLASSIC FACADE



195 URBAN FACADE



195 BEACH FACADE



---

**With you every  
step of the way.**

Partner with G.J. Gardner Homes, and together we'll transform your ideas into reality. Let us guide you through the entire home building process. With our local knowledge and insights coupled with access to your area's local architects, tradesmen and homebuilders, you know you'll be completely looked after by G.J. Gardner Homes.

---

## Locals always at hand.

Designing and building your ideal home is an exciting experience, and when you partner with professional and established builders – G.J. Gardner Homes, the journey will be fulfilling and rewarding.

