

Galleria.



350 Executive facade.

Images may depict landscaping, fences and upgraded fixtures, features or finishes which are not included in the prices stated. For availability and pricing of these items please discuss with your new home consultant.

Allow yourself to imagine the lifestyle you've always wanted, in the home you deserve!

Are you looking for a home in harmony with the needs of today yet flexible enough to still be perfect in years to come?

The Galleria Design range, exclusive to G.J. Gardner Homes, features a superb blend of modern architectural interiors, quality fittings and inclusions and stylish outdoor entertaining. The home features a parents retreat with the master bedroom and lounge room situated at the front of the home. The children's wing is located at the rear of the home with a central activity area creating a space the kids will love.

The Galleria Designs offer individually crafted facades that will inspire you by providing a choice of homes that reflect your personal lifestyle and preferences.

Welcome **home.**

G.J. Gardner. **HOMES**

Galleria facade options.

G.J. Gardner's tailored facades give you the opportunity to personalise your home. With Executive, Classic, Resort, Urban, Traditional and Beach facades to choose from, you can bring your home to life, making it as individual as you are!



Images may depict fixtures, finishes and features not supplied by G.J. Gardner Homes. These items include planter boxes, retaining walls, water features, pergolas, screens and decorative landscaping items such as fencing and outdoor kitchens and barbecues.

350 CLASSIC FACADE



**With you every
step of the way.**

Partner with G.J. Gardner Homes, and together we'll transform your ideas into reality. Let us guide you through the entire home building process. With our local knowledge and insights coupled with access to your area's local architects, tradesmen and homebuilders, you know you'll be completely looked after by G.J. Gardner Homes.

350 URBAN FACADE



350 BEACH FACADE



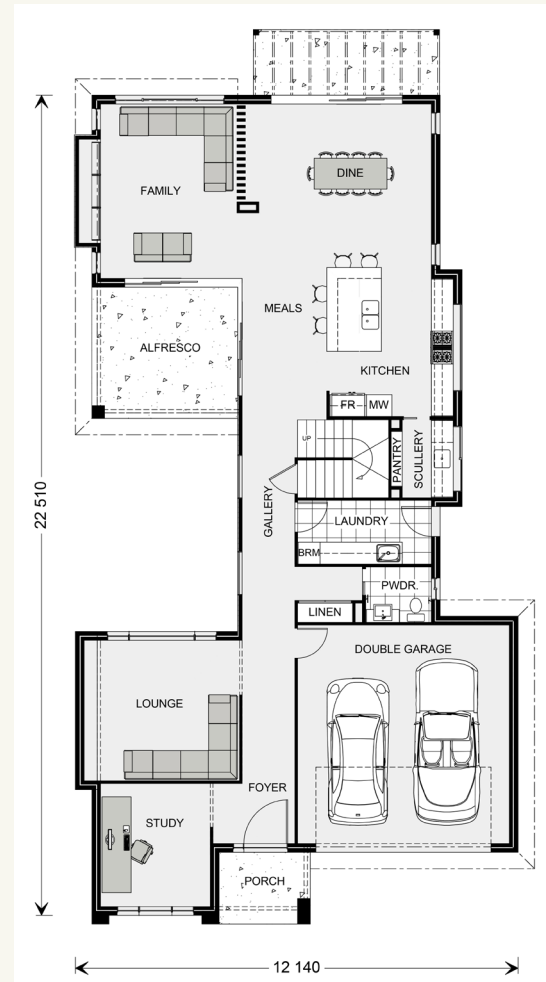
Galleria 352.

4  2.5  2 

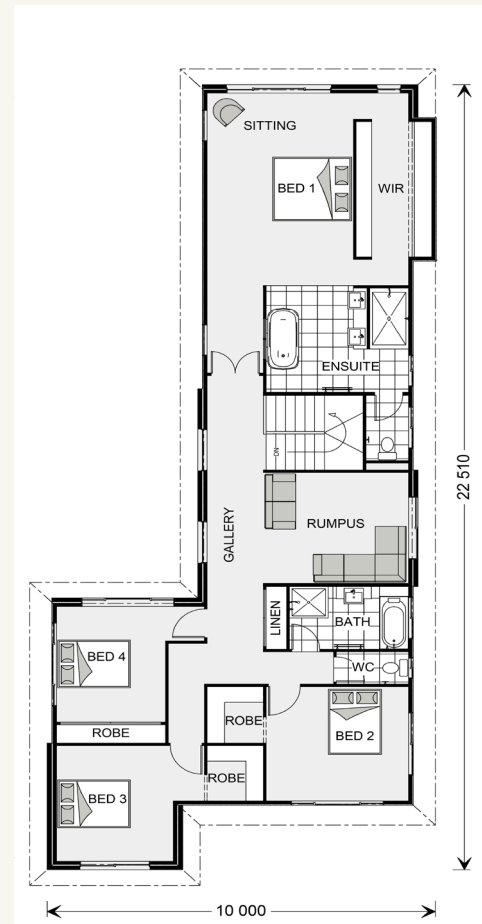
FEATURES

- + 4 bedrooms
- + Ensuite and walk in robe to master bedroom
- + Kitchen
- + Scullery
- + Family room
- + Dining room
- + Lounge room
- + Study
- + Rumpus room
- + Alfresco
- + Double garage

GROUND FLOOR
Galleria 352 Classic
facade floorplan



UPPER FLOOR



SPECIFICATIONS

GF Living:	150.6 sq.m	16.36 sq
UF Living:	144.5 sq.m	15.70 sq
Garage:	38.3 sq.m	4.16 sq
Alfresco:	14.0 sq.m	1.52 sq
Porch:	4.3 sq.m	0.46 sq
GF Total:	207.2 sq.m	22.52 sq
UF Total:	144.5 sq.m	15.70 sq
Total:	351.7 sq.m	38.22 sq

TOTAL AREA

Width: 12.14 m

Length: 22.51 m

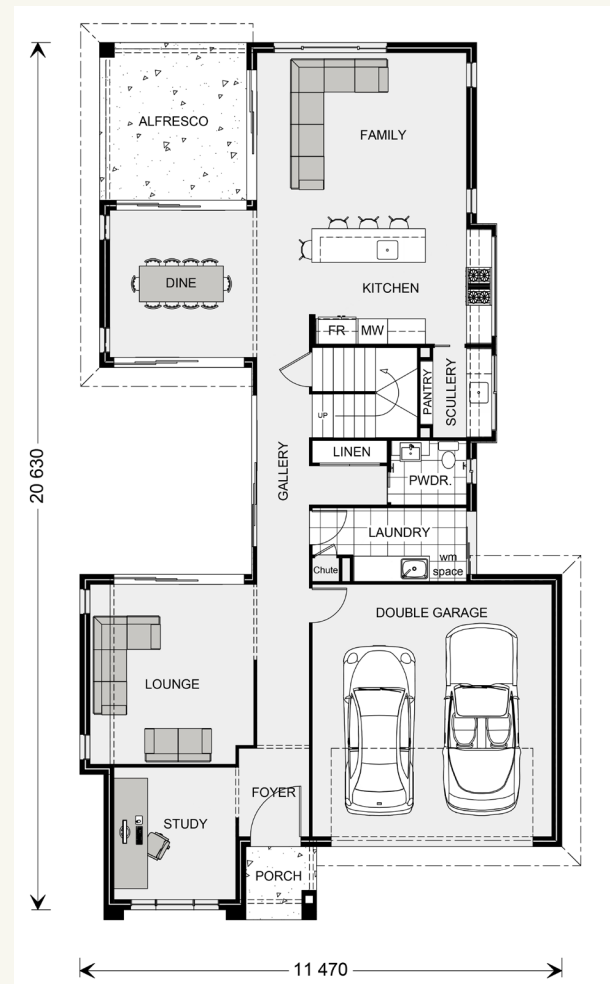
Galleria 305.

4  2.5  2 

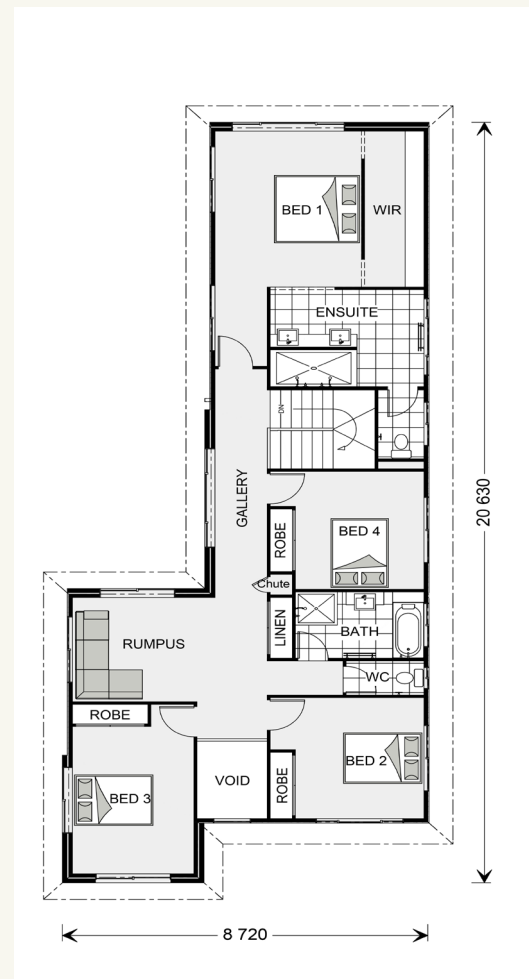
FEATURES

- + 4 bedrooms
- + Ensuite and walk in robe to master bedroom
- + Kitchen
- + Scullery
- + Family room
- + Dining room
- + Lounge room
- + Study
- + Rumpus room
- + Alfresco
- + Double garage

GROUND FLOOR
Galleria 305 Classic
facade floorplan



UPPER FLOOR



SPECIFICATIONS

GF Living:	127.3 sq.m	13.8 sq
UF Living:	123.6 sq.m	13.43 sq
Garage:	37.6 sq.m	4.08 sq
Alfresco:	13.1 sq.m	1.42 sq
Porch:	2.6 sq.m	0.28 sq
GF Total:	180.6 sq.m	19.63 sq
UF Total:	127.1 sq.m	13.81 sq
Total:	307.7 sq.m	33.44 sq

TOTAL AREA

Width: 11.47 m

Length: 20.63 m

Galleria 277.

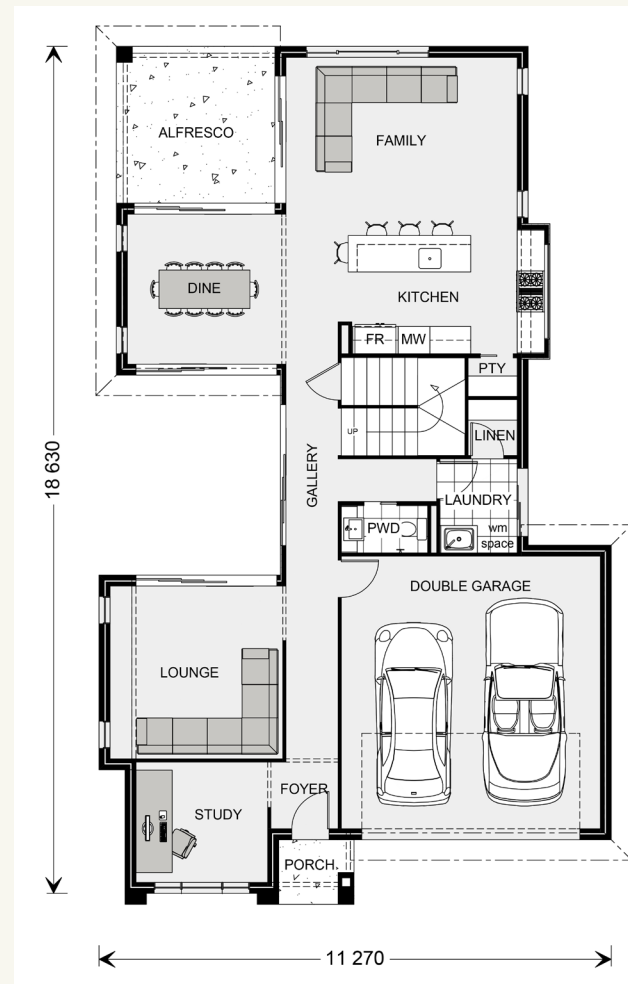
4  2.5  2 

FEATURES

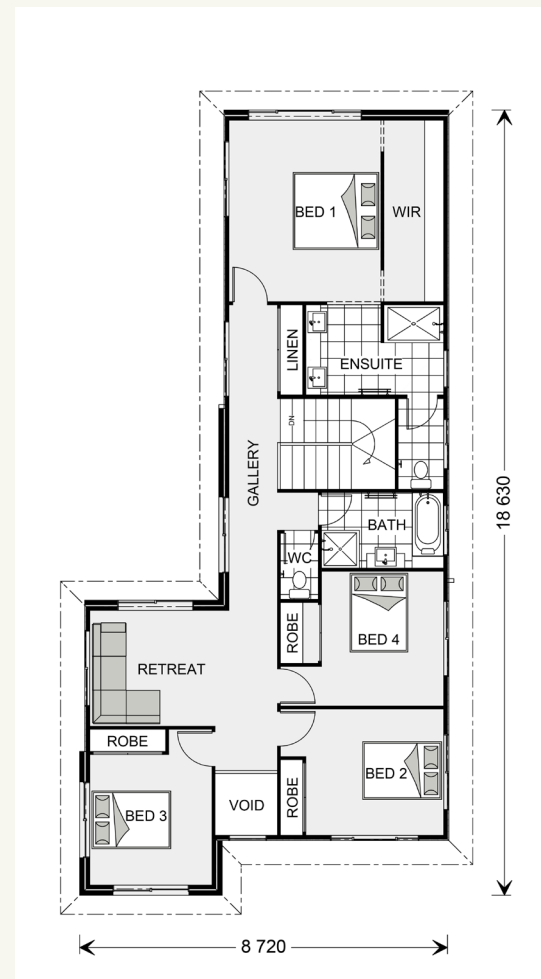
- + 4 bedrooms
- + Ensuite and walk in robe to master bedroom
- + Kitchen
- + Family room
- + Dining room
- + Lounge room
- + Study
- + Retreat
- + Alfresco
- + Double garage

GROUND FLOOR

Galleria 277 Classic facade floorplan



UPPER FLOOR



SPECIFICATIONS

GF Living:	111.9 sq.m	12.16 sq
UF Living:	113.2 sq.m	12.30 sq
Garage:	37.5 sq.m	4.07 sq
Alfresco:	12.0 sq.m	1.30 sq
Porch:	1.8 sq.m	0.19 sq
GF Total:	163.2 sq.m	17.73 sq
UF Total:	115.4 sq.m	12.54 sq
Total:	278.8 sq.m	30.30 sq

TOTAL AREA

Width: 11.27 m

Length: 18.63 m

Galleria 250.

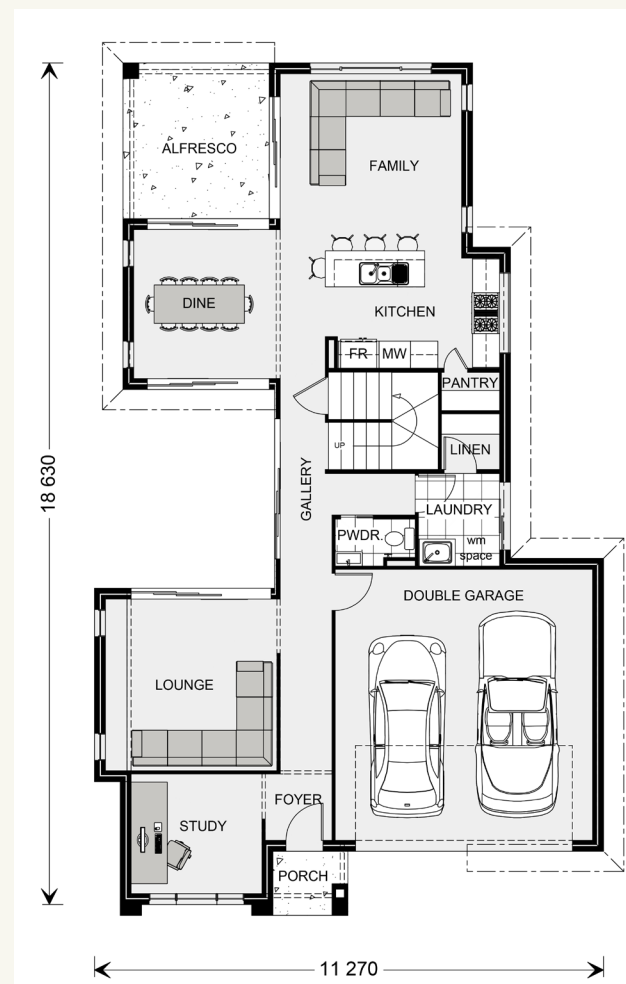
4  2.5  2 

FEATURES

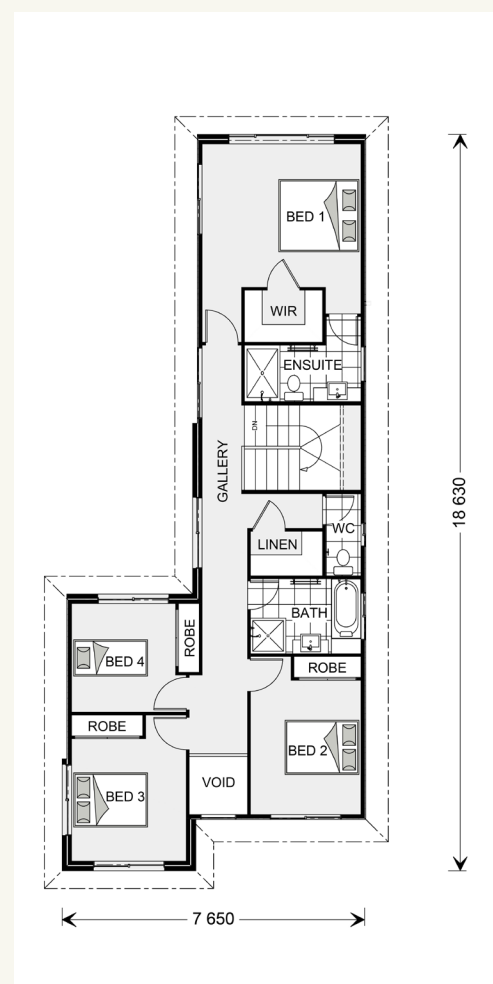
- + 4 bedrooms
- + Ensuite and walk in robe to master bedroom
- + Kitchen
- + Family room
- + Dining room
- + Lounge room
- + Study
- + Alfresco
- + Double garage

GROUND FLOOR

Galleria 250 Classic facade floorplan



UPPER FLOOR



SPECIFICATIONS

GF Living:	103.4 sq.m	11.23 sq
UF Living:	94.4 sq.m	10.26 sq
Garage:	37.6 sq.m	4.08 sq
Alfresco:	11.2 sq.m	1.21 sq
Porch:	1.8 sq.m	0.19 sq
GF Total:	154.0 sq.m	16.73 sq
UF Total:	96.6 sq.m	10.5 sq
Total:	250.6 sq.m	27.23 sq

TOTAL AREA

Width: 11.27 m

Length: 18.63 m

Locals always at hand.

Designing and building your ideal home is an exciting experience, and when you partner with professional and established builders – G.J. Gardner Homes, the journey will be fulfilling and rewarding.

