

**The
Kensington.**





You've found it! Kensington Designs, exclusive to G.J. Gardner Homes, with its flowing interior spaces and sublime connections to the outdoors, redefines family living.



An upstairs retreat provides a perfect separation of family and personal spaces. The large master bedroom, with its huge walk-in robe and ensuite, has been created for privacy, it is a place to relax and re-energise.

Designed to fit from wider to narrower sites, the Kensington's double garage can also be built as a single, making it perfect for urban blocks. Unparalleled flexibility, the Kensington is King for all size blocks.

Kensington 226.

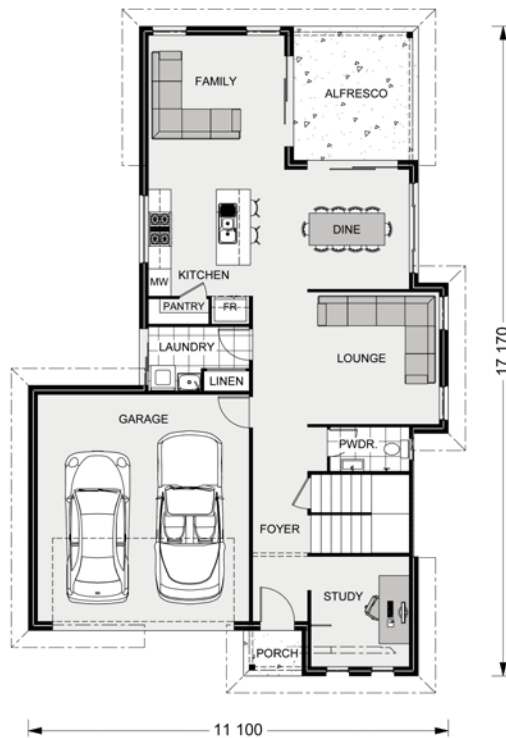
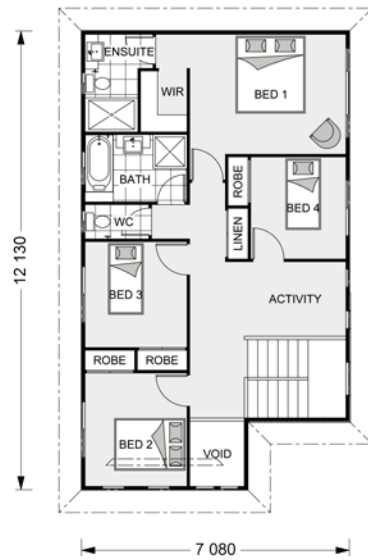


Suits standard lot width: 12m +

Floor Areas - Resort Façade

Living:	172.6 m ²
Garage:	37.1 m ²
Alfresco:	11.7 m ²

Porch:	1.8 m ²
Void	2.8 m ²
Total:	226.0 m²



Kensington 241.

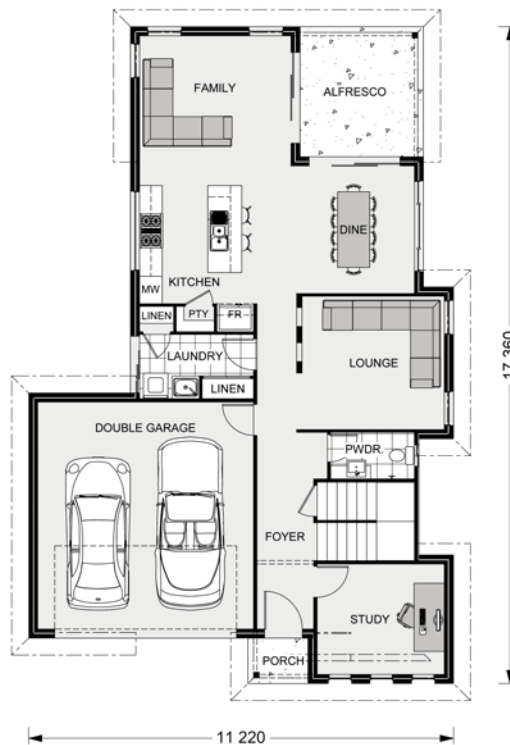
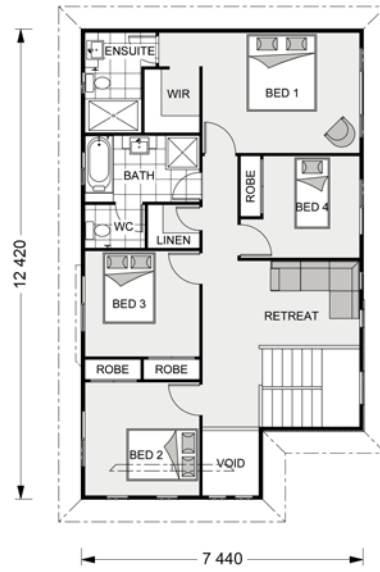


Suits standard lot width: 12.5m +

Floor Areas - Resort Façade

Living:	187.4 m ²
Garage:	37.7 m ²
Alfresco:	11.2 m ²

Porch:	1.9 m ²
Void	2.9 m ²
Total:	241.1 m²



Kensington 270.

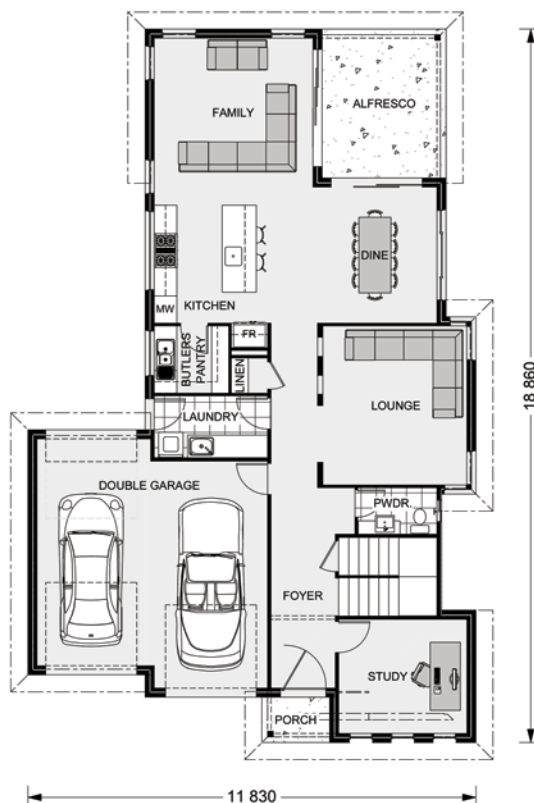
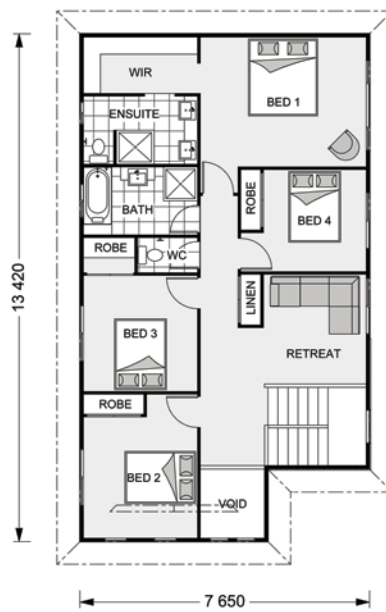


Suits standard lot width: 13m +

Floor Areas - Resort Façade

Living: 211.0 m²
 Garage: 40.4 m²
 Alfresco: 12.9 m²

Porch: 2.1 m²
 Void 3.4 m²
Total: 269.8 m²



Kensington 299.



Suits standard lot width: 14m +

Floor Areas - Resort Façade

Living: 236.8 m²
 Garage: 42.7 m²
 Alfresco: 13.7 m²

Porch: 2.1 m²
 Void 3.4 m²
Total: 298.7 m²



**Your trusted
local builder.**

📞 **132 789** | gjjgardner.com.au