

Richmond 246.



**Allow yourself to imagine the lifestyle you've
always wanted, in the home you deserve!**

The Richmond 246 offers hassle-free dual living with great street appeal. Unit 1 features four bedrooms – a rarity in dual living – and a spacious, open-plan kitchen and living area that opens onto a covered alfresco. Tucked away at the rear of the home is Unit 2, a self-contained one-bedroom flat with ensuite, walk-in robe, full kitchen and a surprisingly large living area. Unit 2 also boasts its own alfresco area and courtyard. Each unit comes with a secure single garage, so that from the street the Richmond 246 looks like a stylish family home.

The Richmond Dual offers individually crafted facades that will inspire you by providing a choice of homes that reflect your personal lifestyle and preferences.

Call **132 789**
or visit **gjgardner.com.au**

Welcome **home.**

G.J. Gardner. HOMES

Richmond 246 Dual.



Features

- + Two self-contained dwellings
- + 1x four-bedroom and 1x one-bedroom unit
- + Indoor and outdoor living options
- + Classic façade with great street appeal

Specifications

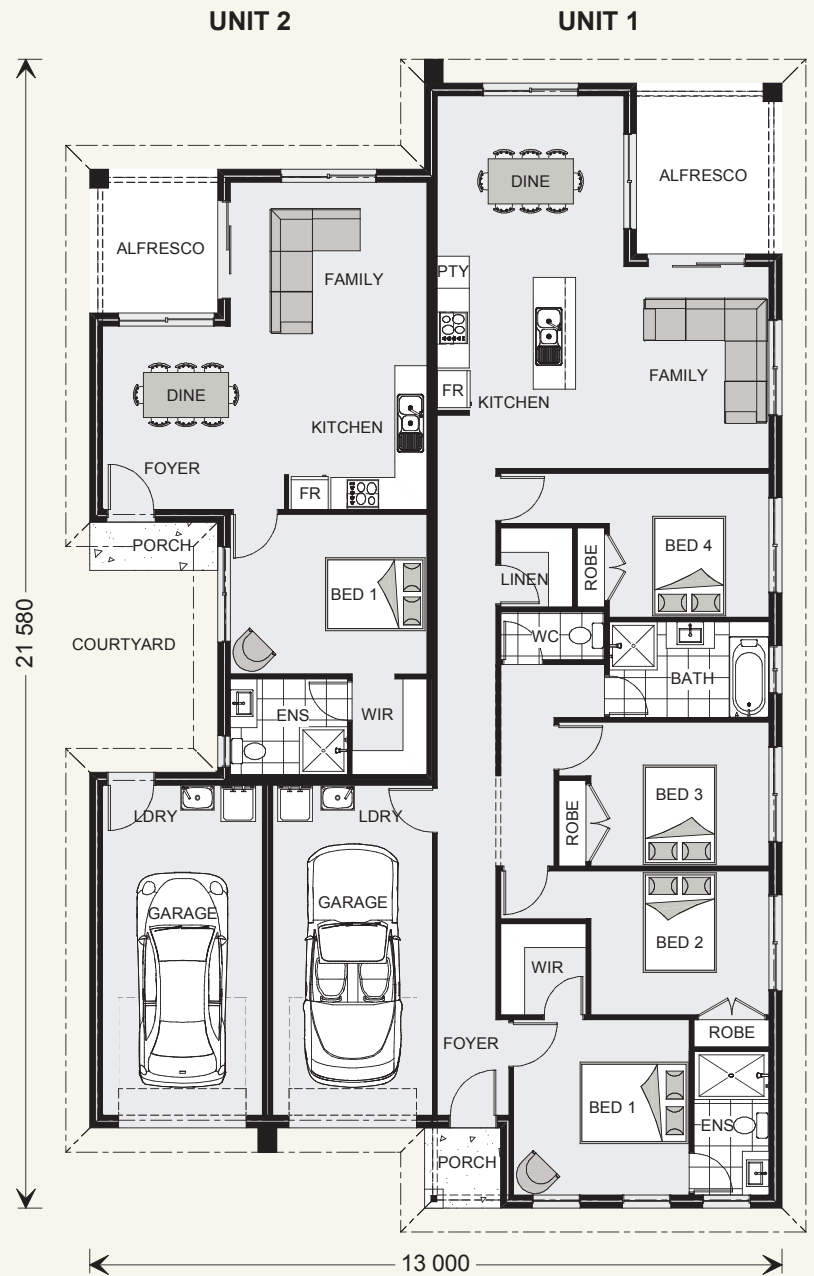
UNIT 1

Living:	128.3 sqm
Garage:	20.3 sqm
Alfresco:	8.8 sqm
Porch:	2.1 sqm
Unit 1 Total:	159.5 sqm

UNIT 2

Living:	55.6 sqm
Garage:	22.2 sqm
Alfresco:	6.5 sqm
Porch:	2.2 sqm
Unit 2 Total:	86.5 sqm

TOTAL: 246.0 sqm



*Classic Floorplan Shown

NOTES
