

Sherwood 227.



Allow yourself to imagine the lifestyle you've always wanted, in the home you deserve!

The Sherwood 227 offers two fully self-contained dwellings within one stylish, 227-square metre package. Featuring one three-bedroom unit and a separate one-bedroom unit, this design is perfect for investors or growing families needing some extra privacy and space. Both units boast an ensuited master bedroom with walk-in robe, open-plan indoor/living spaces and a designer kitchen with mini breakfast bar. Two separate, secure garages at the front of the home create a classic suburban façade with great street appeal.

The Sherwood Dual offers individually crafted facades that will inspire you by providing a choice of homes that reflect your personal lifestyle and preferences.

Call **132 789**
or visit gjgardner.com.au

Welcome **home.**

G.J. Gardner. HOMES

Sherwood 227 Dual.



Features

- + Two self-contained dwellings
- + 1 x three-bedroom and 1 x one-bedroom unit
- + 2 x master bedroom with ensuite and walk-in robe
- + Spacious indoor/outdoor living

Specifications

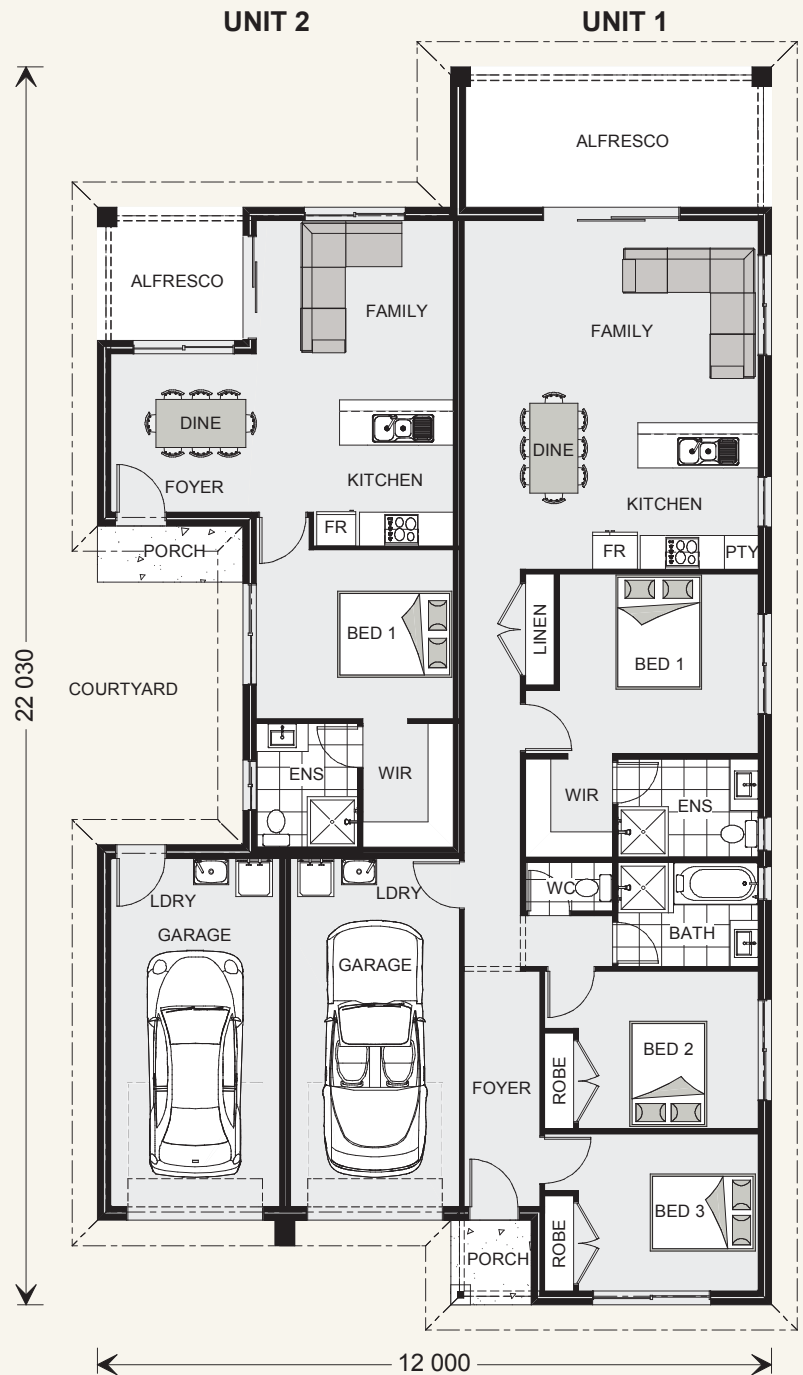
UNIT 1

Living:	106.8 sqm
Garage:	20.3 sqm
Alfresco:	14.3 sqm
Porch:	2.1 sqm
Unit 1 Total:	143.5 sqm

UNIT 2

Living:	52.7 sqm
Garage:	22.2 sqm
Alfresco:	6.1 sqm
Porch:	2.6 sqm
Unit 2 Total:	83.6 sqm

TOTAL: 227.1 sqm



*Classic Floorplan Shown

NOTES
