

# Stoneleigh 170.

RESORT

## **Allow yourself to imagine the lifestyle you've always wanted, in the home you deserve!**

An open-plan family room forms the heart of the Stoneleigh 170, which boasts an elegant spatial flow designed to make the most of narrower home sites.

Welcome your guests via the front porch and stylish entry foyer, before entertaining in the central main living zone, which takes in the kitchen and indoor dining and flows out to a second alfresco dining area. Four bedrooms, a central main bathroom with separate WC and a designated media room or lounge provide plenty of space for family living. Other features include a laundry and single lock-up garage with convenient internal access.

The Stoneleigh offers individually crafted facades that will inspire you by providing a choice of homes that reflect your personal lifestyle and preferences.

Welcome **home.**

**G.J. Gardner.** HOMES

## Stoneleigh 170 facade options.

G.J. Gardner's tailored facades give you the opportunity to personalise your home. With Executive, Classic, Resort & Urban facades to choose from, you can bring your home to life, making it as individual as you are!

CLASSIC



EXECUTIVE



URBAN



Images may depict fixtures, finishes and features not supplied by G.J. Gardner Homes. These items include planter boxes, retaining walls, water features, pergolas, screens and decorative landscaping items such as fencing and outdoor kitchens and barbecues.

## Stoneleigh 170.



### FEATURES

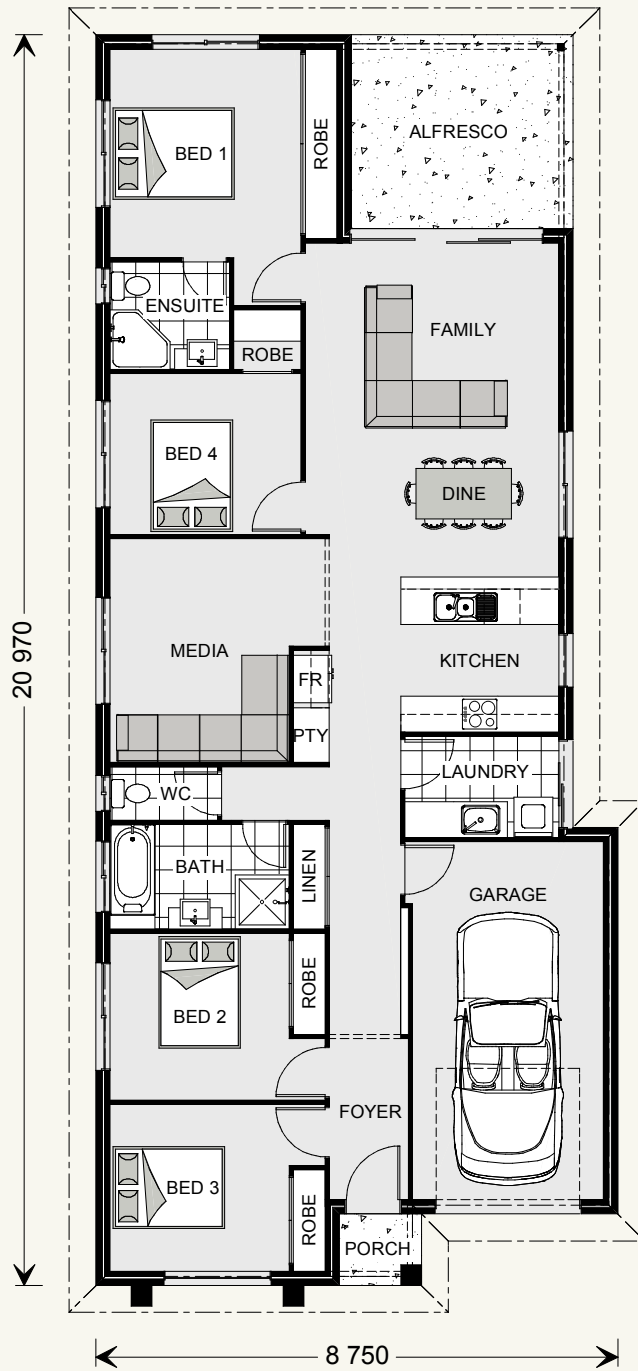
- + Open-plan living space that flows onto the alfresco living area
- + Separate media room or lounge
- + Four bedrooms
- + Designed to fit on 10 metre wide sites

### SPECIFICATIONS

<b>Living:</b>	134.0 m <sup>2</sup>
<b>Garage:</b>	21.8 m <sup>2</sup>
<b>Alfresco:</b>	12.1 m <sup>2</sup>
<b>Porch:</b>	1.7 m <sup>2</sup>
<b>Total:</b>	169.6 m <sup>2</sup>

### TOTAL AREA

<b>Width:</b>	8.75 m
<b>Length:</b>	20.97 m



### NOTES

---

---

---

---

---

---

## Locals always at hand.

Designing and building your ideal home is an exciting experience, and when you partner with professional and established builders – G.J. Gardner Homes, the journey will be fulfilling and rewarding.



Internal photographs are from different G.J. Gardner Homes to those featured in this brochure.

Contact us on **132 789**  
or visit [gjgardner.com.au](http://gjgardner.com.au)

**G.J. Gardner.** HOMES