

Nelson Bay.



Allow yourself to imagine the lifestyle you've always wanted, in the home you deserve!

The spacious nature of the Nelson Bay means it is easy for you to move right in.

The exceptionally clever design of this two-storey home provides for flexible entertaining. Do you want to have a formal dinner to commemorate those important family occasions, or enjoy yourself more casually in the family room which flows easily onto the lifestyle alfresco? You don't have to choose because both are catered for with well-considered and effortless connections between the living areas.

The Nelson Bay design, exclusive to G.J. Gardner Homes, is built to impress with its luxurious, liveable and contemporary layout.

The Nelson Bay Design offers individually crafted facades that will inspire you by providing a choice of homes that reflect your personal lifestyle and preferences.

Contact us on **132 789**
or visit gjpgardner.com.au

Welcome **home.**

G.J. Gardner. HOMES

Nelson Bay facade options.

G.J. Gardner's tailored facades give you the opportunity to personalise your home. With Executive, Resort, Classic and Urban facades to choose from, you can bring your home to life, making it as individual as you are!

EXECUTIVE



RESORT



CLASSIC



URBAN



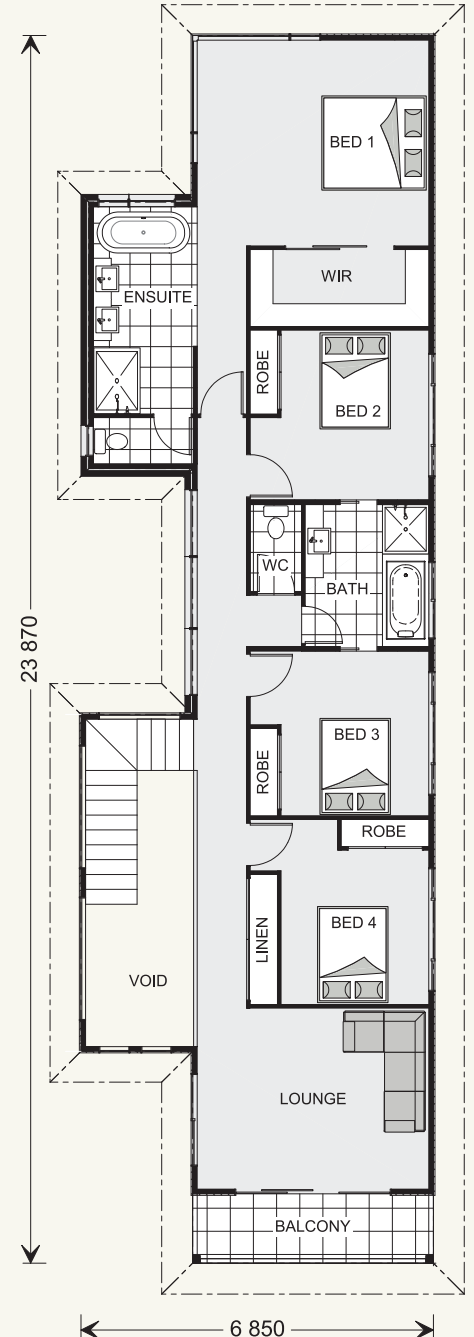
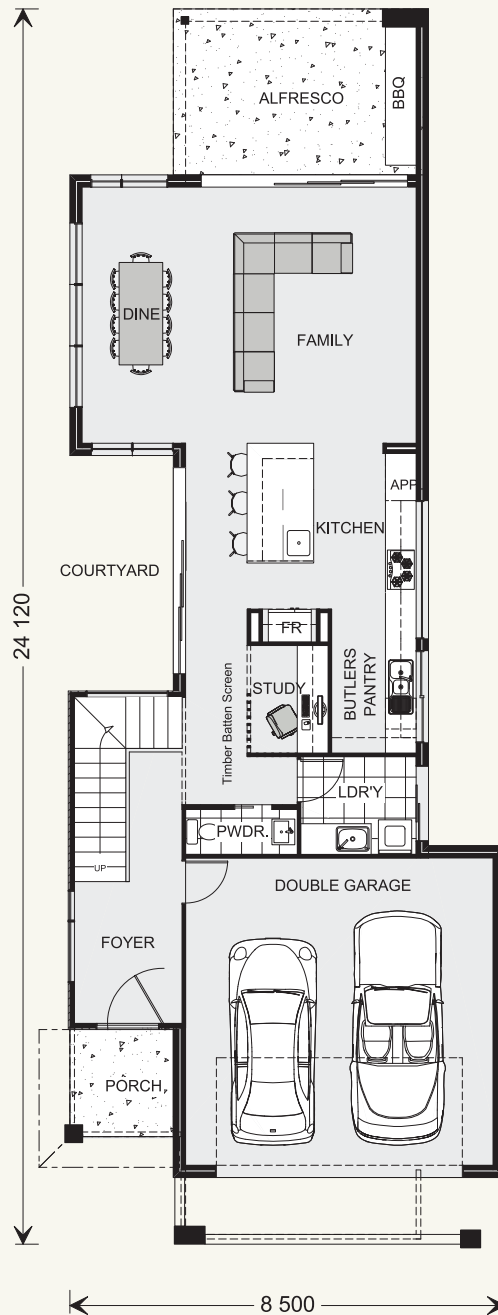
Images may depict fixtures, finishes and features not supplied by G.J. Gardner Homes. These items include planter boxes, retaining walls, water features, pergolas, screens and decorative landscaping items such as fencing and outdoor kitchens and barbecues.

Nelson Bay 294.



FEATURES

- + Study
- + Butler's pantry
- + Lounge & family room
- + Lifestyle alfresco



SPECIFICATIONS

Floor Area-Ground

Living:	91.8 m ²
Garage:	40.0 m ²
Alfresco:	16.1 m ²
Porch:	4.3 m ²
Total:	152.2 m ²

Floor Area-Upper

Living:	135.6 m ²
Balcony:	6.3 m ²
Total:	141.9 m ²

Total Area

Total:	294.1 m ²
--------	----------------------

Width: 8.50 m

Length: 24.12 m

NOTES

**Locals always
at hand.**

Designing and building your ideal home is an exciting experience, and when you partner with professional and established builders – G.J. Gardner Homes, the journey will be fulfilling and rewarding.



Internal photographs are from different G.J. Gardner Homes to those featured in this brochure.

Contact us on **132 789**
or visit **gjjardner.com.au**

G.J. Gardner. **HOMES**